

St. James'

PARISH MAGAZINE

APRIL 2011

www.christleton.org.uk

35p

Appointments in April

| | | | |
|------|----|--|---|
| Fri | 1 | 6.30 pm | Choir Practice |
| Sat | 2 | 7.30 pm | Music at St James Chester Ladies Choir in Concert The Crew Sleep Over in Parish Hall |
| Sun | 3 | 8.00 am 10.45 am 10.45 am 6.30 pm | Holy Communion - Order 2 - Revd Canon Peris Williams Family Service - Revd Canon Peris Williams Sunday School Evensong - Revd John Carhart Prayer Link Road: Croft Close Neighbourhood Link: Beryl Cummings |
| Mon | 4 | 10.45 am 11.20 am | Holy Communion at Tarvin Court Nursing Home Holy Communion at Oaklands Nursing Home |
| Tues | 5 | 7.30 pm | Churches Together Lent Talk - St James Parable of the Good Samaritan - Prof Tom Greggs |
| Wed | 6 | 10.45 am | United Holy Communion - Revd Canon Peris Williams followed by refreshments |
| Thur | 7 | 12 noon | Lent Lunch for Christian Aid - Methodist Church |
| Fri | 8 | 6.30 pm | Choir Practice NB: Last date for contributions for May Parish Magazine preferably earlier, to Janet Milton (335469) or you can e-mail this to christletonmag@hotmail.co.uk |
| Sat | 9 | 1.30 pm 7.00 pm | Wedding - Philip Clegg & Rowena Croston David Cummings Illustrated Talk "Around the World in 90 Minutes" Followed by light supper – Parish Hall – Tickets £6 from Village Store Church or David Cummings (332410) |
| Sun | 10 | 8.00 am 10.45 am 6.30 pm | Holy Communion - Order 1 - Revd Gill Hibbert Family Service - Revd Canon Chris Samuels Followed by refreshments Evensong Prayer Link Road: Durban Avenue Neighbourhood Link: Jenny Brown |
| Mon | 11 | 2.00 pm | Mothers Union - Parish Hall |
| Tues | 12 | 7.30 pm 7.30 pm | Churches Together Lent Talk - Methodist Church Parable of the Pharisee & the Tax Collector - Hazel Bradley Bereavement Support Group - Badgers Close |
| Wed | 13 | 10.45 am 11.30 am | Holy Communion - Revd Gill Hibbert followed by refreshments. Holy Communion at Birch Heath Lodge Nursing Home |

| | | | |
|------|----|---|--|
| Fri | 15 | 10.30 - 2.30 pm | Coffee Morning for Neuromuscular Centre -Parish Hall |
| Sat | 16 | 6.30 pm 09.00 - 1.00 | Choir Practice Parish Council Open Morning - Parish Hall |
| Sun | 17 | 8.00 am 10.45 am | PALM SUNDAY Holy Communion - Order 1 - Revd Brian Harris Palm Sunday Procession with Lucius the donkey leaves Littleton to cross the fields to St James for a Communion service followed by refreshments in the Parish Hall. Bishop of Birkenhead - Rt Rev Keith Sinclair & Rev Gill Hibbert |
| | | 6.30 pm | Evensong - Revd Canon Chris Samuels (Palm Crosses will be given at each service) Prayer Link Road: Fir Tree Lane Neighbourhood Link: Chris Bower |
| Wed | 20 | 10.45 am | Holy Communion - Revd Chris Samuels followed by refreshments |
| Thur | 21 | 7.30 pm | Maundy Thursday - Revd Canon Peris Williams |
| Fri | 22 | 10.45 am 2.00 pm | GOOD FRIDAY Family Service - Revd John Carhart Devotion - Dr Wayne Morris |
| Sun | 24 | 8.00 am 10.45 am 12 noon 6.30 pm | EASTER DAY Holy Communion - Order 1 - Revd Canon Chris Samuels Holy Communion - Revd Canon Peris Williams & Dr Wayne Morris - followed by refreshments Baptism - Maisie Wilson Evening Communion/Festal Evensong - Revd Brian Harris Prayer Link Road: Greenfield Lane & Claypits Lane Neighbourhood Link: June Owen |
| Wed | 27 | 10.45 am | Holy Communion - Revd Canon Peris Williams followed by refreshments |
| Sat | 30 | 12 noon | Wedding - Christian Evans & Amanda Conian |



“Letter from our Rector designate”

Dear Friends

Both Joyce and I are very much looking forward to joining you at St James.

As we begin the season of Lent, I thought I might share my thoughts with you.....

The Holy Land has long been a place of Christian Pilgrimage. Even in times of danger and difficulty there has been a steady stream of pilgrims visiting the Holy Places and seeking to enter more fully and more deeply into the story of our salvation, inescapably rooted in particular events and times and places.

Back in the fourth century, despite the vagaries of transport, there were pilgrims, especially in Lent, Holy Week and Easter.

Although they didn't know Lent as we know it, they did keep a time of fasting and penitence, it was a time, not so much of setting down and giving up, but rather a time of prayer, of engaging, and a time of repentance.

Remarkably, the Journal of one such pilgrim still remains, a devout Roman lady called Egeria. She writes of a complex pattern of worship centred on Jerusalem, of walking through the deserts in Lentof gathering to walk the way of the Palms on Palm Sunday, to celebrate the Eucharist and to keep watch on the evening of what we now call Maundy Thursday, to attend to the starkness and bareness of the Cross on the Friday, to watch and wait in the darkness of the Garden on Holy Saturday and then to celebrate with great joy on Easter Day.

It was not so much a series of services which Egeria and her fellow pilgrims attended, but one extended meditation and celebration, interspersed with space to rest and relax before returning to the way of the Passion. As the keeping of Lent, and Holy Week spread from Palestine into the dispersed Church this concept of one extended celebration was retained. Over the centuries and in many different settings Christians have found it helpful to follow the pattern set by those early pilgrims –

As they do so they have found great depth and richness and new truths and understanding breaking forth from what we thought was the “old, old story”. Above all they know that they have met with God afresh and anew, and their relationship with him is transformed.

The time from the beginning of Lent and through Holy week until finally the joyful Easter Resurrection is powerful and filled with grace.

Of course, the Church doesn't pretend that it doesn't know what happens to the crucified Jesus – we can look on the events of the Upper Room, the Betrayal, The Cross and the Tomb in the light of resurrection and the knowledge of the forgiveness and love declared there, but we need to enter again and again into the story to discover the depths of meaning, and the costly love of God.

The pattern of services during Lent can seem “rather a lot” to tidy minds that like spirituality ordered and safe, but without it we become impoverished and risk losing the meaning of our faith altogether.

Kenneth Leech, an influential writer on spirituality and politics, and the drug culture, and the parish church, and a great deal more writes in his most recent book,

“I see more than ever how dangerous and spiritually damaging it is to jump right into the Hosannas of Palm Sunday and then the Alleluias of Easter Day, bypassing the anguish of Gethsemane, the dereliction of Calvary and the perplexity of the ‘descent into hell’. If we try to bypass this, then spirituality becomes a form of kitsch – a nice feeling, offering comfort without transformation”.

Strong words, but I sense that he is right – the pattern of Lent and Holy Week allied to open and searching hearts can be the making of us and of a church community. Lent, Holy Week and Easter is not a time to pick and choose, but to enter into the one celebration, spread throughout the season, and so enter afresh into the wonder and awesomeness of the love of God, after the struggles and questions and reflections of what is gone before. As we encounter the events of salvation in liturgy and symbol and word and silence, they will work their transforming power on us, and through us on this place where the Lord has called us to be.

Let's immerse ourselves completely into this season and discover again the amazing grace that lies at the heart of being a Christian !

Your faithful servant

Malcolm



OPEN THE BOOK

For the past two and a half years, a small group of Anglicans and Methodists has joined Andy Avery, a Primary Schools Worker, at Christleton Primary School early each Wednesday morning for Morning Assembly. Under Andy's expert leadership, we sing songs (often with appropriate actions) and tell/act out stories from the Bible - both from the New and Old Testaments - and occasionally with help from almost life-size puppets, or exceedingly clever mop-heads!

The children (and, we think, their teachers) appear to enjoy it all immensely and respond readily and happily - and often with great gusto- to all we do. We find it amazing just how much they remember when we go through things at the end of the year. We ourselves feel it a great privilege to be able to do this, and enjoy ourselves immensely too!

So if your child comes home from school singing 'Our God is a great big God' or 'Great great brill brill' as he or she jumps up and down and punches the air, you will know who to blame!

Jan Bowden



Before you reach Easter, consider this

How much good will Easter do you this year?

That all depends on one aspect of your inner life. If it is working well, you will get a tremendous lot out of Easter. If it is not working well, then Easter will be useless to you this year.

Even though you attend all the Lent talks, go to all the services in Holy Week, and eat Easter eggs and chocolate bunnies until they come out your ears.

So what is this part of your inner life? Forgiveness. Not from God to you, but between you and other people. Your willingness - to forgive other people. Everyone has something to forgive. You'll have been hurt by various people throughout your life. And undoubtedly you will continue to be hurt by people for the rest of your life.

Life is like that. Being a Christian does not alter it. But being a Christian does alter the way we are expected to deal with it.

But why worry about it now, in Lent? Because each week in church, when you approach God in worship, what do you say?

When you pray the Lord's Prayer you say the words: 'forgive us our trespasses, as we forgive those who trespass against us.'

Easter is all about Jesus dying on the cross to forgive us our trespasses. As we forgive those who trespass against us.

On Sundays when you go up for Holy Communion, the minister summons you with the words: Ye that do truly and earnestly repent you of your sins, and are in love and charity with your neighbours....

So - come to the Lord's table, eat the bread and drink the wine - his flesh and blood, shed for you on the cross. If you are in love and charity with your neighbours....

And Easter is the actual historical event that we commemorate in the bread and the wine. So this Lent, just how willing are you to forgive others? If you harbour bitterness, then Easter will not do you any good this year.

Jesus put it like this in Matthew chapter 6: "For if you forgive men when they sin against you, your heavenly Father will also forgive you. But if you do not forgive men their sins, your Father will not forgive your sins."



VILLAGE VOICE

CHURCHES TOGETHER
IN CHRISTLETON

LENT LUNCH
Thursday 7 April

12.00 1.30 pm

Methodist School Room
All Welcome
Proceeds to Christian Aid



Christleton Wednesday Group

Soup & Sweet

Spring Lunch

Wednesday 13 April,

at Christleton Parish Hall, 12.00 noon.

Ticket £7.50, including a glass of wine,

(available from members or

phone 01244 336644)

In aid of Hope House Children's Hospice

COFFEE MORNING & BOOK SALE

Parish Hall, Christleton 15 April between 11 am – 2 pm

In aid of the Neuromuscular Centre



Donations of books & jigsaws would be greatly appreciated.

Contact Emily Swinerd Community fundraiser (01606861733)

HELP PLEASE

**Help wanted please to decorate the church for Easter on
Saturday 23 April at 9.15 am.**

Contact Olive Hammond (336562) or Alison Kenyon (335587).

CONTRIBUTORS

The best way to send in contributions to St. James' Parish magazine is to
email the document.

Attach your word document and email it to:

christletonmag@hotmail.co.uk

Christleton Parish Council Annual Open Morning Saturday 16th April 2011. 10am - 12 noon The Parish Hall, Christleton

Find out more about:

Community

Our Community Plan

**Best
Kept
Village**

Toddler Group

Traffic Action

Our schools

Homewatch
HOWEWATCH

Police

The History of Christleton

The Little Heath Play Area -
what's it going to be like?

The Pit Group

The
site

Councillors

King
George's
Fields

Village Web-

The Institute

The Fete

Wednesday
Group

The Village Show

Fire
and
Rescue

Refreshments

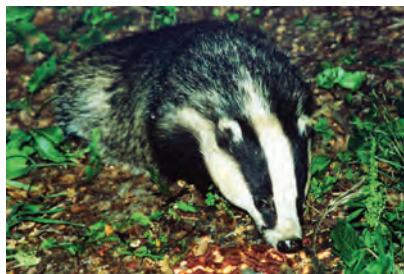
Contact: The Clerk to the Parish Council

Sue Thwaite 01244 318618
christletonpc@hotmail.com

Nature Notes

This month has been the month of the mammal for me with sightings of two foxes, two badgers (sadly one was a road-side kill) and several fresh water vole holes at Hockenhull.

As most of our mammals are usually about at night most people don't see them, but many are active around the village. It's usually dusk when I come across them, but there are places where I used to take youngsters from school to see them in daylight. The



most famous sett being near Burwardsley where one old brock could be persuaded to come out even at mid day for a lunch of peanuts. Thanks to our giving them many experiences of Outdoor Education most Christleton Primary School children had seen badgers live in the countryside before they left school, and more often or not in the 1970s foxes would be seen walking around the school field. In fact one pair brought up a number of cubs in land between "The Ring O Bells" and the school field, before



Walnut Cottage was built. Another regular sighting was a tawny owl who would sit on one of the poplar trees at Hockenhull during the daytime, and was quite content to allow me to take the children to get quite a close up view.





I'm pretty sure that the first migrant has arrived (4th March) when we heard a chiff chaff give its warning call in trees near Rowton Bridge.

Shortly afterwards on 7th March

I spotted my first butterfly, a brightly coloured tortoiseshell which

was sunning itself on our garden

hedge. Some of these early butter-

flies hibernate in outbuildings, garages,

or even once inside St James' Church, but are

normally not as highly coloured as was this individual.



There are currently three pairs of swans along the canal in our stretch, the Waverton pair, the Pit pair and another pair previously resident near Hoole Lane Lock. The cob from this pair is BPB (blue ring) which comes from Bury in Lancs, but has had at least five different females over the years, and all have failed to rear



cygnets on the nest site close to the Hoole Lock. The single bird on the Pit is one I rescued last summer, and re released by the RCPCA at The Pit. It will be chased off by our regular pair when (if) they decide to return to the Pit to breed. CP58 the Christleton Pit cob is now 20years old and his limp doesn't get any better. It's possible that he won't get back to the Pit this year, and stay on the canal. Watch this space!

David Cummings

COLLATION & INDUCTION of NEW RECTOR
at ST JAMES
WEDNESDAY 4 MAY at 7.30 pm

Arrangements are in hand for the Collation Service at St James when our new Rector Malcolm Cowan will be collated by the Bishop of Birkenhead the Rt Rev Keith Sinclair and inducted by the Archdeacon of Chester the Ven Dr Michael Gilbertson.

We expect a large number of the clergy from the Deanery to be in attendance together with a number of visitors from Malcolm's former Parish of St Helen Witton, Northwich and of course, members of St James congregation and Christleton Parish.

Refreshments will be served in the Parish Hall after the Service.

VILLAGE TEAS

It was agreed at the Coffee Morning held on 8 March that the Village Teas would be served again this summer on Sunday afternoons commencing on 5 June and finishing on 25 September. Any money raised this year would be donated to Save the Family and Children Today. A rota was drawn up of volunteers who would be serving the teas and there are one or two dates still available if anyone is interested. If you would like to help fill these gaps we would love to hear from you.

We look forward to seeing you at the Methodist Church in June.

Please contact : Janet Milton (335469) Jayne Roscoe (335836)
Sheila Roberts (336754)



Village News.

Restoration & Repair along the canal.

Regular walkers along the canal towpath will notice the work being done on restoration and repair along the stretch of the canal between the Ring Road Lock and Waverton. A lagoon has been created on the field adjacent to Christleton Lock to take some sludge, and on other sections the canal bank has been restored using a system of posts and webbing, with soil and sludge then being used as infill to create the new embankment. The company carrying out the work are Blue Boar, who were also involved in the removal of silt from "The Pit" in 2007.



Refurbishment of Children's Play Area.

Work on the refurbishment of the Children's play area at King Georges Field is now taking place, and it is hoped that it will reopen by the end of March with much needed, improved and exciting new facilities for the youngest members of the community.



The Trooper Inn

I'm sure people will have noticed the refurbishment taking place at The Trooper in the last few weeks. Whilst looking for photographs in the Parish Archives I found a slide of the original Trooper Inn sign which once stood outside the building. This Inn Sign was an actual painting, and illustrated "The Trooper" a Cavalry Officer in the Royalist Army during the English Civil War. The Village would have seen many of these troops passing through during the years 1642-1646 supporting King Charles I when he visited Chester, or just garrisoned in the city to protect it from attack by the Parliamentary Forces led by

Sir William Brereton, whose headquarters were at The Old Hall in Christleton.

Coming Shortly.

Saturday April 9th 7.0pm in The Parish Hall.

Around the World in 90 minutes.

Tickets £6 including light refreshments.

From Village Stores, Church or David on 332410

History File

Ronald Hugh Smith. 1931-2011

Over the centuries Organists & Musical Directors at St James' have played their part in influencing musical styles, and musical events in the church. Ronald Hugh Smith with the full help and support of his wife Pauline, contributed as much as any. He was appointed to St James' in June 1968 to work alongside Rev. Canon Laurie Skipper, having played previously at Christ Church Newtown, St Andrews Tarvin and Holy Ascension in Upton. He was conductor of the Chester Ladies Choir, Founder & Director of the Chester St Cecilia Singers, Conductor of the Runcorn & Widnes Orpheus Choir and accompanist to the Arts Council of Great Britain. In that role he accompanied most well known singers of the day, at The Festival Hall, Wigmore Hall and many provincial Concert Halls. His early life in Chester, had been influenced by him being a chorister at Chester Cathedral and he later studied piano, organ and harmony with such famous musicians as Malcolm Boyle, Cyril Smith & Sir Charles Groves.

When he came to Christleton there were 19 choirboys. 4 ladies and 8 gentlemen in the choir, and this continued throughout his time, even having 26 boys in the choir, with reserves waiting in the wings at times. He and his wife Pauline, herself a well known soprano were regularly acting in loco parentis, by taking the boys on holidays to Anglesey, Rhos on Sea, Colwyn Bay and the Isle of Man. Ron also ran two football teams in the Chester Choir League and Christleton usually finished top of the league.

His influence in music was immense, changing the structure & style of the church services, and promoting concerts of high quality.

Music at St James included;

November 1968 The Creation by Haydn with The Runcorn & Widnes Orpheus Choir.

Soloists, Pauline Smith, Kenneth Stark and Wayne Turner.

November 1969 Elijah with The Runcorn & Widnes Orpheus Choir. Soloists, Margaret Lloyd, John Stanley, Kathryn Haley, Peter Fletcher & St Cecilia Singers.

April 1970 Stainers Crucifixion with Ken Stark & Peter Appleford.
November 1970. Handel's Messiah, with Margaret Davies, Kathryn Haley, Ken Stark and Peter Appleford. All works conducted by Ron Smith himself.

He also brought visiting choirs to sing, including choirs from Brugges, Antwerp & Romania. The church choir also contributed to Carol Singing in the Precinct, and at Harvest suppers.

Whilst researching this article I found a delightful note in an old magazine, which related to the entertainment provided at the 1970 Harvest Supper. The main artists were Pauline Smith, Patricia Russell, Rhona Turner, Kenneth & Jean Stark all well known musicians in the area. They were joined in several numbers by the Rector, Laurie Skipper who writes; "It seems on such occasions that I am to be regarded as the resident comedian and most serious songs were in danger of losing something of their dignity by my presence".

After leaving the Chester area Ron and Pauline went to live in Rhos on Sea, and he continued to contribute a great deal to the musical life of North Wales, through his work as an organist, accompanist, and especially his work with the Royal National International Eisteddfod between 1982-1999. He also worked for the BBC on programmes such as Songs of Praise, and toured all over the U.K. and internationally with the St Cecilia Singers. He was made a Member of the Royal Society of Music for his immense lifetime achievement to music. A well deserved honour.

David Cummings

Why does the date for Easter move about so?

When's Easter in any given year? Easy – find the first Sunday after the full moon that follows the Spring Equinox (March 20 or 21). What? If it all sounds a bit confusing, well, here's the history behind it all....

It all began with the ancient Hebrews. They based their calendars upon the rhythms of the moon. These lunar calendars worked well for them, and everything was fine. Then Christianity arrived – in the Holy Land, where the first century Jews were still using the lunar calendar. Fine. But then Christianity moved on to Rome, which was using a different calendar – one based upon the sun. (The Gregorian calendar, which we use today, and which is in widest use throughout the world, is based on the Roman sun calendar.) Now establishing certain days in the year became difficult. Especially Easter. The results were often confusing. Early church leaders, both Jewish and Roman, agreed that everything to do with the coming of Jesus Christ had been prepared, even the position of the sun, the moon and the stars. They could not agree, however, on how to fix the day for the yearly celebration of Easter. It was not until the fourth century, with the help of astronomers who took into account the position of both the moon and the sun in relation to the earth, that a decision was finally made. At last it was accepted that Easter would always be celebrated on the first Sunday after the full moon that follows the Spring Equinox (March 20 or 21). That is why Easter falls anytime between 22 March and 25 April



CHRISTLETON LENT TALKS

5 April

Professor Tom Greggs
The Parable of the Good Samaritan
7.30 pm at St James

12 April

Hazel Bradley
The Parable of the Pharisee and the Tax Collector
7.30 pm at the Methodist Chapel

Royal promises - and no escape clauses!

Probably not since the marriage of Prince Charles and Lady Diana in 1981 will so many people be watching a Christian wedding ceremony as will doubtless be on April 29th. The future heir to the throne, Prince William, will marry Kate Middleton in Westminster Abbey.

The solemn and moving words of the service will echo around the world: 'to have and to hold, from this day forward; for better, for worse, for richer, for poorer, in sickness and in health, to love and to cherish, till death us do part'. As one groom - a lawyer, needless to say - remarked to me, 'Not many escape clauses there!'

The exchanging of rings is equally uncompromising: 'all that I am I give to you, and all that I have I share with you'. All that I am? All that I have? My car, my laptop, my precious handbag . . . and my aching heart? All? It's such a comprehensive word; it leaves nothing outside its limits.

Marriage is, on these terms, the total giving of one person to another, for life. It's both wonderful and awesome. No matter how many weddings you attend, those vows still move you. This is what love, as God understands it, is all about. It's not 'I love you and I want you and I'm going to have you' (which is how modern culture sometimes portrays it) but about the total giving of one human being to another. It mirrors the self-giving love of God as we see it in the life of Jesus - which may be why St Paul compares the love of a husband for his wife to Christ's love for his people (Ephesians 5:25).

You may notice, as the service proceeds, just how often the word 'love' occurs in it. Indeed, the opening words sum it all up: 'God is love, and those who live in love live in God and God lives in them.' This is the great sacrament of love. On April 29th we can - wherever we are - share in its joy.



"It's the only way we can cope with all the couples who want to get married on the same day as William and Kate."



Christleton High School

A Specialist School in Maths and Computing with Business and Enterprise



**This is how the
career ladder
looks to some.**

This is how the career ladder looks to some. Some young people have no-one they can look up to.

At Christleton High School we help young people make the right choices. Our goal is simple – for every child to achieve their full potential.

If you have the time, skills and experience, volunteer today and give a local child a leg-up. Contact: Jean Charlton by e-mail Charltonj@christletonhigh.co.uk – Ref CAREERS

Real Easter Egg on its way to become a UK top seller

A church backed campaign has succeeded in convincing retailers to stock The Real Easter Egg, the UK's first and only Fairtrade charity egg to mention Jesus on the box.

Morrison's, Waitrose, Co-op and Booths are to stock a limited 'trial listing' of the Real Easter Egg and sell it in their biggest stores. A number of independent shops and a selection of cathedrals are also stocking The Real Easter Egg. And hundreds of Traidcraft supporters have ordered thousands of eggs on behalf of their communities.

The retail price of The Real Easter Egg is £3.99. It is made from high quality Fairtrade chocolate. Two charities benefit from the sale of the egg: Traidcraft Exchange receives 30 pence from every egg sold and Baby Lifeline will receive 10% from Real Easter Egg net profits.

Despite selling over 80 million Easter eggs a year, supermarkets initially turned down The Real Easter Egg, unsure if there was a place for a charity-faith egg in their Easter range. The Rt Revd, Nigel McCulloch, Bishop of Manchester, said; "It is great news that for the first time people will have the chance of buying an Easter egg from a shop that explains the significance of the festival on the box. Through the charitable donation and its Fairtrade chocolate the egg brings to light the Easter themes of hope and new life. I believe there will be widespread support for the product from the faith community with many others likely to be interested."



Virtual Real Easter Egg hunter:- With demand expected to outstrip supply Google Maps is providing the 'Virtual Real Easter Egg hunter' which allows people to hunt for an independent shop or church in their area where they can buy the Real Easter Egg.

Visit www.realeasteregg.co.uk.

High Days & Holy Days for April

3rd Richard of Chichester - wanting God more clearly, dearly and nearly

Ever wonder where the prayer ... 'May I know thee more clearly, love thee more dearly, and follow thee more nearly, day by day' comes from? Richard of Chichester, a bishop in the 13th century, wrote it.

He began life as Richard de Wych of Droitwich, the son of a yeoman farmer. But Richard was a studious boy, and after helping his father on the farm for several years, refused an advantageous offer of marriage, and instead made his way to Oxford, and later to Paris and Bologna to study canon law. In 1235 he returned to Oxford, and was soon appointed Chancellor, where he supported Edmund, Archbishop of Canterbury, in his struggles against King Henry III's misuse of Church funds. After further study to become a priest, Richard was in due course made a bishop himself. He was greatly loved. He was charitable and accessible, both stern and merciful to sinners, extraordinarily generous to those stricken by famine, and a brilliant legislator of his diocese. He decreed that the sacraments were to be administered without payment, Mass celebrated in dignified conditions, the clergy to be chaste, to practise residence, and to wear clerical dress. The laity were obliged to attend Mass on Sundays and holy days, and to know by heart the Hail Mary as well as the Lord's Prayer and the Creed. Richard was also prominent in preaching the Crusade, which he saw as a call to reopen the Holy Land to pilgrims, not as a political expedition. He died at Dover on 3 April 1253. In art, Richard of Chichester is represented with a chalice at his feet, in memory of his having once dropped the chalice at Mass! One ancient English church is dedicated to him. And, of course, he is author of that famous prayer, now set to popular music, which runs in full: 'Thanks be to thee, my Lord Jesus Christ for all the benefits thou hast given me, for all the pains and insults which thou hast borne for me. O most merciful redeemer, friend and brother, may I know thee more clearly, love thee more dearly and follow thee more nearly, day by day.'



21st Anselm - the man who proved there is a God

Anselm is a good saint to remember next time someone asks you to prove

that there is a God. His brilliant and original Proslogion, written 1077-8, sets out the 'ontological' proof for God's existence. Nearly ten centuries later, it is still studied by theological students as one of the great philosophical 'proofs' of God's existence. Anselm was born at Aosta in 1033, the son of a spendthrift Lombard nobleman, whom Anselm detested. In time he decided to become a Benedictine monk, and joined Lanfranc's famous monastery at Bec (c. 1060). He became prior, then abbot. He was loved by his monks, appreciated for his sensitivity and intuitiveness. He remained friends also with Lanfranc, who had gone on to be Archbishop of Canterbury. After Lanfranc's death, Anselm reluctantly agreed to accept the job. Archbishops did not have press offices in those days, but Anselm made his views on Church-versus-King known all the same, and they did not please the king. William Rufus exiled him in 1097 and King Henry I exiled him in 1103. Anselm was utterly committed to what he saw as the cause of God and the Church, and had no time for temporal politics. Peace between archbishop and monarch was not achieved until 1106.

Anselm spent the rest of his life in England. His theological stance of 'Faith seeking understanding' and 'the mind at faith's service' were the keys to his life and teaching.



25th Mark - disciple, apostle, writer of the second gospel

Mark, whose home in Jerusalem became a place of rest for Jesus and his 12 apostles, is considered the traditional author of the second gospel. He is also usually identified as the young man, described in Mark 14.51, who followed Christ after his arrest and then escaped capture by leaving his clothes behind. Papias, in 130, said that in later years Mark became Peter's interpreter. If so, then this close friendship would have been how Mark gathered so much information about Jesus' life. Peter referred to him affectionately as his 'son'. Mark was also a companion to Paul on his journeys. When Paul was held captive at Rome, Mark was with him, helping him. Mark's Gospel, most likely written in Italy, perhaps in Rome, is the earliest account we have of the life of Jesus. Mark died about 74 AD. Early in the 9th century Mark's body was brought to Venice, whose patron he became, and there it has remained to this day. The symbol of Mark as an evangelist, the lion, is much in evidence at Venice.



Christleton High School

A Specialist School in Maths and Computing with Business and Enterprise



The Duke of
Edinburgh's Award



PHYSICAL

RESIDENTIAL

SKILLS

VOLUNTEERING

EXPEDITION

Christleton High School wants to hear from you if you are interested in volunteering to assist young people with the **Duke of Edinburgh's Award**

Do you have the time, skills and experience to make a difference?

If you enjoy outdoor activities, have good organisational skills and feel you are a good role model for young people - why not volunteer and help children in your community to gain their Duke of Edinburgh's awards?

To find out more contact: Jean Charlton by e-mail
charltonj@christletonhigh.co.uk, quoting reference DoE

Christian Connection

Dearly beloved, before we sing the next hymn.... will you marry me?

The popular dating site Christian Connection is celebrating its first 10 years - with a video documenting a string of successful unions, including one marriage proposal during a morning service! (She said 'yes'.)

Romance is certainly thriving these days: Christian Connection now has membership numbers almost three times higher than just two years ago. The website has busy forums, instant chat, and social events - including speed dating, of course! People say that they "trust the site ... trust the ethos and the values," and overall, are grateful that there is a Christian dating website to go to. Since Christian Connection's launch there have been approximately 600 weddings and engagements. If you are seeking friendship and maybe romance, visit www.christianconnection.co.uk

WHAT'S ON THIS MONTH

SUNDAY SCHOOL

Held in the Parish Hall from 10.45 am – 11.45 am each Sunday during term-time, except when Family Service is held at St. James. For further details please contact Berenice Hogg, 336779.

CHRISTLETON METHODIST CHURCH we meet for Informal Prayers and a Simple Lunch on the first Thursday of each month at 12 noon. All welcome. There is no charge for the lunch but a donation to cover costs would be appreciated.



CHRISTLETON W. I.

Meets on the second Wednesday of the month at 7.15 pm in the Parish Hall. 13th April, LORD OF THE ISLES Gavin Hunter

CHESTER FLOWER CLUB

Meetings are held in Christleton Parish Hall on the 3rd Wednesday of the month at 1.30pm. Details of any events can be obtained from the Secretary, Mrs Edna Ellis telephone Chester 346497.

MAGAZINE CONTRIBUTIONS

Please ensure all items for inclusion in the April edition are sent to Janet Milton (335469), as soon as possible BEFORE Friday 8 April or you can e-mail this to christletonmag@hotmail.co.uk

MAGAZINE DISTRIBUTORS

The March magazine will be available for collection from church on Sunday 27th March

GROSVENOR MUSEUM SOCIETY

The next meetings of the Society will take place at the Grosvenor Museum as follows :

APRIL Thursday 28th : A History of Music Hall in Words and Song

Virginia Kettle

MAY Wednesday 25th : Law and Order in 14th Century Cheshire

Paul Booth

Meetings start at 7.30pm.

Entrance : Members free; Guests and Non-Members suggested donation £4.00; Students £2.00

Membership details from Ken Holding, tel 312689; email k.holding@sky.com

Music at St James' Presents



Chester Ladies Choir and guests

Saturday 2nd April at 7.30 pm
St James' Church Christleton
Tickets £8
(Complimentary refreshments)

Contact Brenda Bailey at St James'
or tel. 01244 335034

"A relaxing evening of light music and entertainment"



LEPROSY MISSION

Stamp out leprosy!

Please donate your used stamps so that money can be raised for Leprosy Mission.

Stamps should be trimmed to quarter inch border around the stamp and can be left at the back of the Church.

PLEASE TELL US....

If you know of any special birthdays, anniversaries or anyone celebrating a special occasion, who is a Parish magazine reader. Please inform the editor David Bull

AVAILABLE AT ST. JAMES' CHURCH

“Loop” system for the hearing impaired.

Large print books for the visually impaired and large print weekly notice sheets

Easy to follow Communion Service

Books for Children

Access for wheelchairs

Please ask any of the Church wardens or Sidesmen if you need assistance in anyway

CHRISTLETON UNDER-FIVES COMMUNITY PLAYGROUP

Registered Charity 1022817

Christleton under fives is an established pre-school playgroup attracting children from a wide area. It enjoys good and well founded links with Christleton Primary School. Children from the age of 2 1/2 years until school age are accepted. Please contact the Supervisor, Carole Penny, on 01244 336586 for further details.

MOBILE LIBRARY VAN SERVICE

The van calls weekly alternate Thursdays all day and alternative Fridays in Quarry Lane.
11.15 - 12.45pm.

For further information of when the van is next in your area, please telephone Upton Library on 01244 380053.

READERS

Please remember to support our magazine advertisers and mention where you have read their name

Parish Registers

Parish Registers for February 2011

The Funeral Service

7th *Paul William John Gover 7 Croft Close, Rowton*
15th *Ethel Morris 2 Bush Road, Christleton*
22nd *Denis Edward Smith Plough Lane, Christleton*
25th *Robert Smith St Mary's Nursing Home, Chiswick, London*

"Grant them eternal rest"

Offertories.

| <u>February</u> | <u>Cash</u> | <u>CSE</u> | <u>2011</u> | <u>2010</u> |
|-----------------|-------------|------------|------------------|-------------------|
| 6th | 114-88 | 603-00 | 717-88 | 1,125-44 |
| 13th | 80-50 | 578-50 | 659-00 | 896-15 |
| 20th | 85-24 | 487-50 | 572-74 | 674-73 |
| 27th | 110-14 | 568-00 | 678-14 | 870-00 |
| <u>Totals.</u> | | | <u>£2,627-76</u> | <u>£ 3,566-32</u> |

"Of your own do we give you"

PARISH CHURCH OF ST. JAMES, CHRISTLETON

| | | | |
|---------------------|------------|-------------------|------------------------|
| SUNDAYS | 8.00 a.m. | Holy Communion | |
| | 10.45 a.m. | Parish Communion | 1st & 3rd Sundays |
| | | Family Service | 2nd Sunday |
| | | Mattins | 4th & 5th Sundays |
| | 6.30 p.m. | Evensong | 1st, 2nd & 3rd Sundays |
| | | Evening Communion | 4th Sunday |
| | | Songs of Praise | 5th Sunday |
| WEDNESDAYS | 10.45 a.m. | Holy Communion | |
| SAINT'S DAYS | 9.30 a.m. | Holy Communion | |

WHO'S WHO & WHAT'S WHAT

| | | | |
|---------------------------------|--|--------------|---------------|
| Rector: | Interregnum All baptism, weddings and appointments by arrangement with Janet Milton, 335469 | | |
| Churchwardens: | John Pearson | | 335101 |
| | Keith Smalls | | 335688 |
| Deputy Wardens | Lois Dickinson | | |
| | Alan McAllester | | |
| Reader | Wayne Morris | 01978 263389 | |
| Verger | David Ellis | | 336879 |
| Sacristan: | Betty Dunning | | 335652 |
| Pastoral Worker: | Berenice Hogg | | 336779 |
| Sunday School: | Berenice Hogg | | 336779 |
| Mother's Union Branch Leader | Janet Brown | | 335785 |
| Organist & Musical Director: | Steve Roberts | | 815277 |
| P. C. C. Secretary: | Brenda Bailey | | 335034 |
| P. C. C. Treasurer: | David Mercer | | 336155 |
| Stewardship Envelope: | Betty Dunning | | 335652 |
| Gift Aid Secretary | Nigel Seddon | | 335588 |
| Bellringers | Ian Braithwaite | | 300565 |
| Bellringers Secretary | Nikki Dromgoole | | 351124 |
| Parish Hall Booking | Janet Milton | | 335469 |
| C. M. S. Secretary | Janet Brown | | 335785 |
| Children's Society Sec. | Lesley Morgan | | 335088 |
| Visiting Group: | Berenice Hogg. | | 336779 |
| Library | Lois Dickinson | | 378320 |
| Church Flowers | Olive Hammond | | 336562 |
| Magazine Editor | David Bull | | 332234 |
| Magazine Compiler | Julie Coxall | | 336062 |
| Magazine Distributors | Jenny Davies and Valmai Griffiths | | 335884 |
| Neighbourhood Link Co-Ordinator | Janet Bowden | | 335705 |
| Parish Resource | | | |
| Person for Child Protection | Alastair Holland | | 332819 |