

Parish Magazine



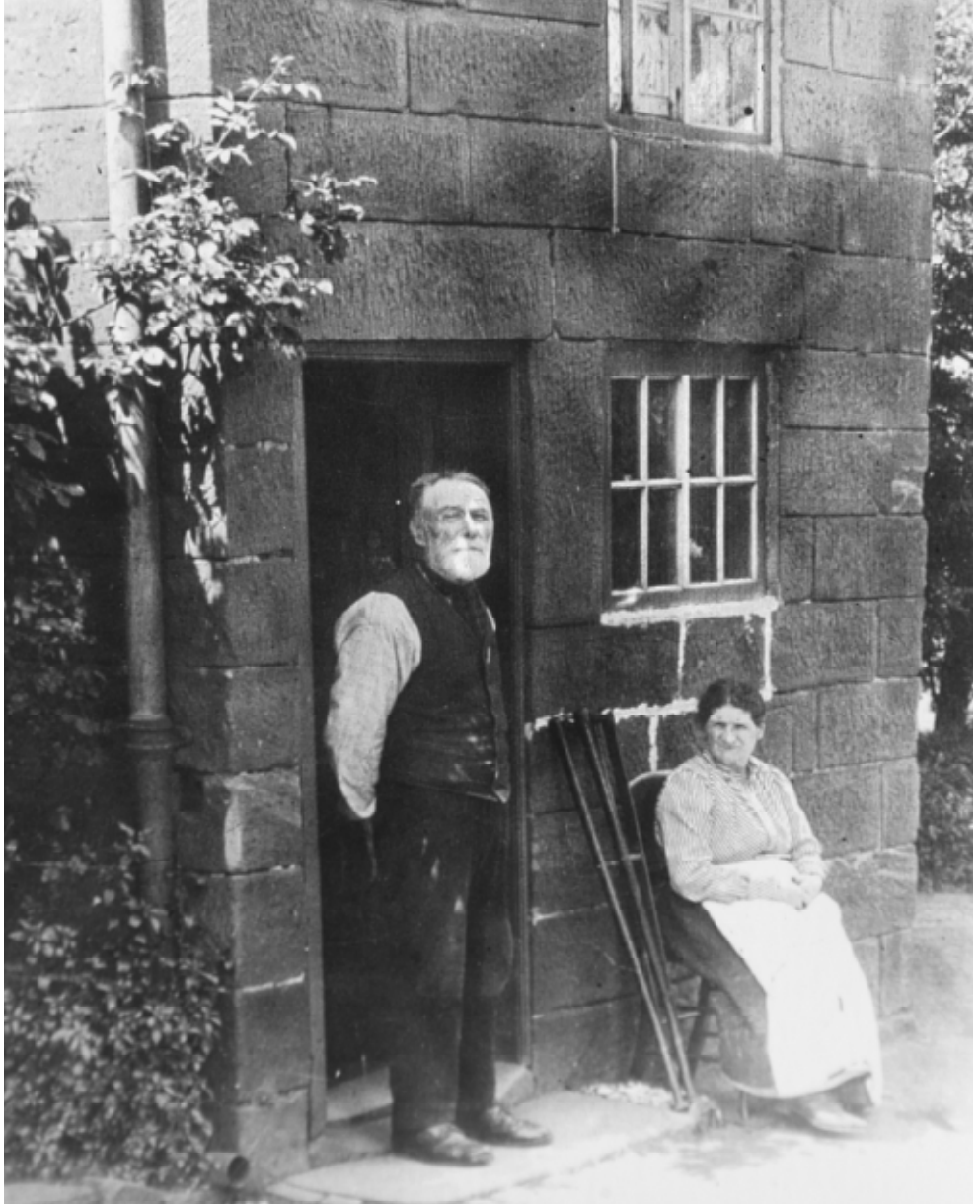
February 2007

St. James'

Christleton

30p

WWW.CHRISTLETON.ORG.UK



Features in February

Sun	4	The Third Sunday Before Lent
	8.00 am	Holy Communion - Order 2
	10.45 am	Parish Communion - Order 1
	10.45 am	Sunday School - Parish Hall
	6.00 pm	The Crew Youth Group - Parish Hall
	6.30 pm	Evensong - followed by refreshments
		Prayer Link Road : Tarvin Road and Brickfield Lane
		Neighbourhood Link : Roger Bellamy, Nigel Seddon and Huw Morgan
Mon	5	
	10.45 am	Holy Communion at Tarvin Court Nursing Home
	11.20 am	Holy Communion at Oaklands Nursing Home
	7.45 pm	PCC Meeting - Parish Hall
Tues	6	
	8.00 pm	Bellringers' AGM - Lady Chapel
Wed	7	
	10.45 am	United Communion - followed by refreshments
	2.45 pm	Parish Visiting Group - White Haven
Fri	9	
	6.30 pm	Choir Practice
		NB: Last date for contributions for March Parish Magazine to David Bull (332234). Earlier if possible please, or you can e-mail this to christletonmag@hotmail.co.uk
Sun	11	The Second Sunday Before Lent
	8.00 am	Holy Communion - Order 1
	10.45 am	Family Service followed by refreshments
	6.00 pm	The Crew Youth Group - Parish Hall
	6.30 pm	Evensong
		Prayer Link Road: The Park
		Neighbourhood Link: Margaret Kingston

Mon	12	2.00 pm	Mothers' Union - Parish Hall
Wed	14	10.45 am	Holy Communion -followed by refreshments
		11.30 pm	Holy Communion at Birch Heath Lodge Nursing Home
Fri	16	6.30 pm	Choir Practice
Sun	18		Sunday Next Before Lent
		8.00 am	Holy Communion - Order 1
		10.45 am	Parish Communion - Order 1
		10.45 am	Sunday School - Parish Hall
		6.00 pm	The Crew Youth Group - Parish Hall
		6.30 pm	Evensong
			Prayer Link Road: The Square
			Neighbourhood Link: Liz Evans
Wed	21		ASH WEDNESDAY
		10.45 am	Holy Communion - followed by refreshments
		7.00 pm	Invitation to Churches Together in Christleton to Mass and Imposition of Ashes - St Werburgh's
Fri	23	6.30 pm	Choir Practice
Sun	25		The First Sunday in Lent
		8.00 am	Holy Communion - Order 1
		10.45 am	Matins - followed by refreshments
		10.45 am	Sunday School - Parish Hall
		6.00 pm	The Crew Youth Group - Parish Hall
		6.30 pm	Evening Communion - Order 1
			Prayer Link: Toll Bar Road Neighbourhood Link: Doug and Betty Johnson
Tues	27	8.00 am	Church Ramble Group leaves car park for Llangollen
Wed	28	7.45 pm	United Lent Talk - St James The Dean: "Christian Perspectives on Medical Issues"

The Rector's Letter

Dear Friends

Health Check!

This is the time of year when people try to get back in trim after the excesses of the Christmas period. Membership of gyms shoots up, people get out walking and running and determine to adopt healthy life styles. Nor is it just an emphasis on physical well-being. Health farms and other amenities recognise we need a holistic approach: that we are whole persons as body, mind and spirit.

This is also something which is true of the Christian life. The Christian faith recognises that God created us as 'whole' beings – body, mind and spirit, and that our well-being depends on our interconnected life being in balance and healthy. It is not by chance that Lent comes at this time of year. 'Lent' means 'Spring', and it is time for our annual health check to ensure we are taking proper care of the life that God has entrusted to us, and developing our God given potential according to our 'instructor's guidance. The tradition of giving something up for Lent is based on the recognition that our body, mind and spirit need to be 'in tune' and that we need to control that balance for healthy living. What are our true priorities in life, and is our present life style fit for purpose?

In Lent we remember how Jesus himself established this process by going into the wilderness for forty days to confirm his real priorities and so overcome the temptations to be diverted from that by short term indulgences. We also remember how he called his disciples and they left all and followed him. Jesus taught us to 'seek first God's Kingdom and his righteousness and all else will be added to you.' This does not mean we become pious or 'holier than thou', but it does mean that we recognise that this is God's world and he has made us for his own. If we do not live our lives according to that insight we shall ultimately be out of tune with life and feel increasingly at 'dis-ease'.

What is right and true for each individual Christian is, of course, also true for us as a Church. Is our Church fit for purpose? – the purpose of establishing God's kingdom on earth as in Heaven; the purpose of enabling people to

meet Jesus and find in him their life instructor to get them on the road to a healthy life style which will fulfil their deepest needs. Christian stewardship is the recognition that all we have and are come from God, and our well being lies in developing and nurturing our life; body, mind and spirit, in tune with God's purposes. To do this we need to let Jesus be our fitness instructor to bring our life up to its full potential. So can we use Lent to look at our whole life – our time, our talents and our possessions, and let Jesus help us towards a better balance? Are we in control of our life or do we let life control us? If we look at our diaries what priorities determine how we apportion our time? If we look at our skills have we developed them to their full potential, and to what purpose are we using them? When we examine our income and our possessions what is the responsible and appropriate way to apportion what we have to what purpose? What proportion do we give to God's work in the life of the Church, and do we feel that reflects that priority?

Ash Wednesday is 21st February so we have time to work out how we can make the best use of Lent this year. There will be the usual opportunities in the Church calendar to help us in our Christian discipleship. I invite us all to give ourselves a health check – body, mind and spirit – and to ask Jesus to be our fitness instructor to set us goals and regimes through Lent and beyond to make us fit for purpose.

Yours sincerely

A handwritten signature in black ink that reads "Peter Lee". The signature is written in a cursive style and is underlined with a single horizontal stroke.

Prayer of the Month:

Living God, we confess our faults and admit our frailty; we own our brokenness and recognise the ways we wound our lives, the lives of others, and the life of the world. By your abundant grace forgive us, renew us in body, mind and spirit, and enable us to grow in love. Move among us and give us life; with the spirit of freedom sustain us that our worship may be joyful and our witness faithful: in the name of Jesus Christ we pray. Amen.

(Norman Shanks: based on prayers in the Iona Worship Book.)

THANK YOU

I would like to say a very big thank you to everyone from Tarvin Road, Littleton, Grove Gardens, Fir Tree Lane, Marbury Road, Stamford Court, Broadmead, Cedar Park, Border Way and Norley Drive, and all that area for donating to the British Legion Poppy Appeal 2006. The cash collection from house to house was £358.20.

Thank you.

Mabel Kirk

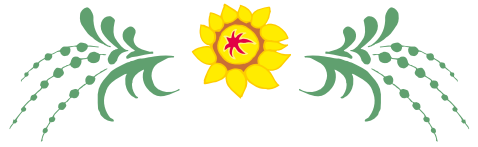
8 Tarvin Road, Littleton, Chester.

and another THANK YOU

I would like to thank the ladies who made cakes for the cake stall at the Christmas Fair. It was very much appreciated.

Also, many thanks to my friends at St James for their good wishes on my recent birthday. I had a lovely day with my family.

Betty Dunning.

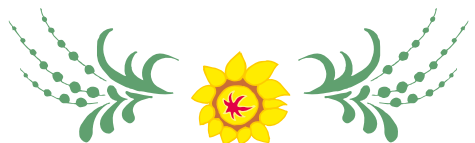


FLOWER FESTIVAL

At St James' Church.

July
13th, 14th, 15th 2007

It is hoped that this will be a Church and Village event so, if you are interested in Flower arranging, or would like to help in any way, please ring 332005





Cover Picture



This month's cover picture by Reg Morgan is the "Salt Box" near Rowton Bridge. This is one of the cottages that currently forms the house, "Twocotts", and was very important in the life of the village. It was the

source of salt, imported via barges on the Shropshire Union Canal for villagers use, to salt and store meat for the winter. These salt houses/stores existed at bridges near to the canal. (I have a photograph of one at Cow Lane Bridge), and were a necessary part of life before the advent of the freezer. I don't know the names of the old couple in the picture, but the photograph probably dates from 1907.



David Cummings

CATHEDRAL NEWS



The New Bishop of Birkenhead

Is to be the Revd Keith Sinclair, currently vicar of Holy Trinity in Coventry city centre. A married father-of-three, he worked as a solicitor before taking holy orders. The London-born priest will begin preparations within the next few weeks for his role as a suffragan bishop in the Diocese of Chester. He is due to be formally consecrated as Bishop of Birkenhead at York Minster on 8 March, 2007.

The Cathedral Ravens

Trevor Dennis writes ...

The Cathedral Ravens are much in evidence at the moment, making almost daily visits to the Tower. They have no nested there since 2003, and whether they will again remains to be seen. Yet they clearly retain a strong sense of ownership of the building, as Trevor Dennis observed in September, when he was sitting at his desk, writing the first of his books. The pair flew in and settled on the old nesting platform (a gargoyle near the south-eastern corner of the Tower), remained there for an hour or so, and then flew off. Half an hour later there was a tremendous racket as the male flew in calling very loudly, accompanied by the piercing call of a peregrine. The peregrine had perched on the Tower, and the raven was claiming back its territory in no uncertain terms. The falcon took off, but did not fly away before it had swooped three or four times on the raven. Eventually it disappeared over Werburgh Street, while the raven sat proudly on the parapet. Raven 3 : Peregrine 1.

Say Hello to Claire (successor to Judy Davies)



I am very much looking forward to coming to the Cathedral in the New Year to work as the Education Officer. Let me briefly introduce myself:

I am originally from Lincolnshire and have also lived for long periods in London, Oxford and Sussex. I moved to the North West three years ago and have enjoyed coming to the Cathedral as a volunteer and helping with educational activities, including the last two Pilgrims' weeks.

My professional background is in nursing and teaching and I have always enjoyed working with children and young people.

It will be both a pleasure and a privilege to work at Chester Cathedral. I hope to continue to maintain, and build on, the excellent work of my predecessor, Judy Davies, and look forward to meeting you all.

Claire Chatterton

Saints' Windows in the Cloisters

St Wulfstan, (also known as Wolstan), son of Athelstan and Wulfgeva was known as a pious youth. He studied at the monasteries of Evesham and Petersborough. When Wulfstan was grown, but still a young man, his parents joined separate monasteries in Worcester. He was a priest who led his flock by good example. He became a Monk at Worcester and taught catechism to children, and served as church treasurer. He became Bishop of Worcester in 1062, and was known for inspirational preaching, great humility, and asceticism. Wulfstan was one of the first bishops in England to make pastoral visits to the parishes of his diocese and was influential in ending the sale of Irish prisoners as slaves in England.

Saints Day: 19 January
Born c.1009 at Icentum,
Warwickshire, England
Died: 1095

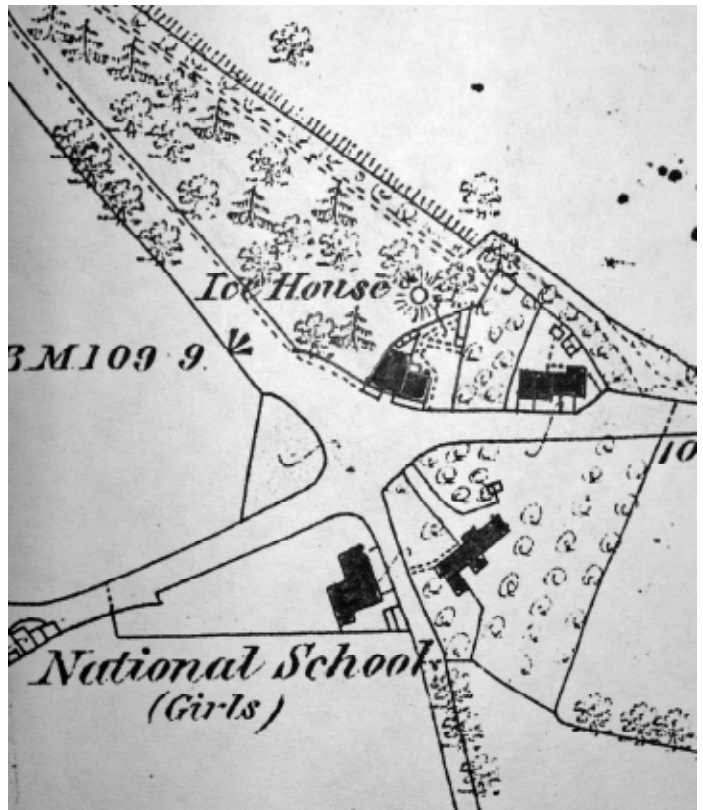
Canonized: 14 May 1203 by
Pope Innocent III

History File

The cover picture this month tells us about the need for salt, a necessity in village life, but there were two other important elements in the story, The Ice House and canal. The Ice House was situated in the grounds of the Old Rectory (now The Grange) in Village Road, and is today buried in the ground just to the right of the main entrance to Christleton High School. It is marked by an iron grid, which covers the original vent hole. It was called an ice house, because ice was collected from local ponds and presumably the canal to take down to the bottom of this deep pit dug into the sandstone,

where meats and fruit could be taken to store during the winter months, providing a steady supply

of food when it was most needed. The Rector, Canon Lionel Garnett who had "The Grange Built" is said to have instigated this unique food store, but it is possibly from an even earlier date in village history. It is clearly marked on



the earliest large scale map that we have. Ice played an important part in the efficiency of these Ice

Houses, and there are reports in the 1870's of ships bringing ice wrapped in straw to England from America, and then distributed around the country. It seems far fetched, but is true. The Ice House was still in visible in the 1950's and there are a number of older residents who remember playing in it. You can still see Ice Houses at Burton Manor and at Tatton Park.

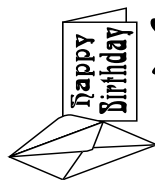
The Canal through Christleton dates from 1772 and is believed to have been designed by James Brindley. He was by all reports a very ordinary young man born in 1716 at Tunstead, in the Parish of Wormhill in Derbyshire. He is best known for his contributions to building canals and waterways, but he also constructed many water, wind mills and steam engines. He was apprenticed as a millwright at seventeen, and at twenty six had founded his own business, constructing mills and steam engines, and this led him into becoming a canal designer and builder.

He was initially responsible for the construction of the Bridgewater Canal taking coal from Worsley

to Manchester. One of his biggest challenges was the Barton Aqueduct across the Irwell, which became one of the wonders of the then engineering world, with visitors coming to see the sight of "ships sailing over ships". In all he was responsible for 375 miles of the canal network, and thanks to his work speeded up the effects of the Industrial Revolution. He is said to have planned the Chester Canal which was commenced in 1772, but he also died that year of diabetes and probably overwork. The Chairman of the Chester Navigation company was Robert Townsend of the Old Hall, Christleton, then Recorder of Chester. He sold much of his own land in the village to the canal company, but the most amazing fact about the building of the canal, is that it took only three years to build, from the River Dee in Chester to Beeston, and then eventually to Nantwich. It was an attempt by the City and Port of Chester to improve its trade, by exchanging goods with the Potteries and Midlands. Linen, wine, tobacco, hides, timber, clay, iron, lead, lime, corn, rock salt, even cotton were thought to be

suitable for transporting from the Old Port, but the venture proved largely unsuccessful, and after the expenditure of £80.000 the canal was halted in Nantwich. Only the later link with Ellesmere Port and the Mersey proved successful, although the addition of the Llangollen and Montgomery Canals making up the Shropshire Union Canal Company did add to the trade. In the early 1800's Thomas Telford is employed by the company as a Consultant Engineer to solve major problems, the two most famous being the Froncystyllte Aqueduct over the R Dee near Llangollen, and the Iron Lock at Tiverton. Telford's Warehouse and Dock can also be seen in the Chester Canal Basin today. The Llangollen canal survives today, because it transports water naturally from the River Dee at Llangollen to Hurleston Reservoir at Nantwich. Over 8,000,000million gallons of water is extracted each day. The water in the canal then circulates back to the river in Chester, a neat form of re cycling!

David Cummings



**Birthdays
this
Month**

**Congratulations to
Catherine McGarva**
who will be 85 years
of age on 31 January

Walsingham Pilgrimage 2007

The City of Chester annual pilgrimage to Walsingham will take place on 7 – 11 May 2007. This year we shall be travelling in the first week in May, which was traditionally the time when the Cathedral used to visit the Shrine. We hope that by travelling at this time many more pilgrims will be able to join us. Cost including transport and accommodation and all meals will be £270. Further information from Fr Peter Walsh 01244-399990.



Close dates for Magazine 2007

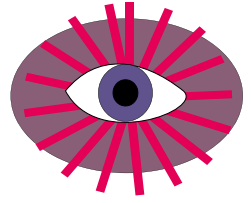
January	01.12.06	February	2.01.07
March	09.02.07	April	09.03.07
May	13.04.07	June	11.05.07
July	08.06.07	August	13.07.07
September	10.08.07	October	14.09.07
November	12.10.07	December	09.11.07
January '08	07.12.07		

Collection dates from Church

January	31.12.06	February	28.01.07
March	25.02.07	April	25.03.07
May	29.04.07	June	27.05.0
July	24.06.07	August	29.07.07
September	26.08.07	October	30.09.07
November	28.10.07	December	25.11.07
January '08	30.12.07		

STOP PRESS: Non electronic items for the magazine previously delivered to David Bull at the Old Rectory, Plough Lane should in future be delivered to Rev. Peter Lee at The Rectory, Birch Heath Lane

Nature Notes



The wet weather has been the dominating feature of this month, and this added to the relatively warm temperatures for this time of year, has meant the arrival of daffodils, spring blossom and I've even heard of butterflies being seen on the wing. Extraordinary sightings for what is still

officially winter. Long tailed tits have been seen regularly, together with good numbers of kestrels. I've also seen several flocks of starlings swirling and wheeling across the skies, but not in the numbers as at Rowton Bridge and in the village two years ago. There seem to be fewer smaller birds in gardens at



present, but as it has been mild there is still a great deal of natural food in the hedgerows and countryside. It really needs a cold snap to bring them in. It was the same last year, as at the time of the RSPB's Big Garden Bird Watch, there wasn't much of a list to report.

Our swans are still on the canal, with the cygnets flying each day, but they seem very reluctant to leave their parents. The cob has damaged a large flight feather on his wing, and is regularly seen bleeding from it. I've caught and cleaned him up twice, as the small amount of blood seeping looks very dramatic against his white feathers, and is worrying passers by. However it is something that will eventually heal itself. Although there have been fewer swans on the River Dee, especially at The Groves

this year, a large flock has again gathered on the Dee Marshes, and near Shotwick Fields. I counted 125 birds on one day, including 36+ beautiful whooper swans from Iceland or Greenland, continuing the pattern of the last three winters. Whooper swans are similar in size to our mute swans, but have a very distinctive yellow bill with a black pointed tip. This particular flock, are feeding on fields of kale/leeks and are very integrated with the mutes. They are also much easier to see, than those swans which are on the marshland between Denhall Lane near Burton and Connah's Quay/ Flint on the Welsh side. These birds tend to feed in the runnels and ditches which punctuate the marsh, and are really only visible when the tide is in.

David Cummings

LOCAL EVENTS DIARY

SUNDAY SCHOOL

Held in the Parish Hall from 10.30 am – 11.45 am each Sunday during term-time, except when Family Service is held at St James. For further details please contact Berenice Hogg, 336779.

CHRISTLETON LADIES GUILD

Held at the Christleton Methodist Church, commencing at 2pm, on the first Tuesday of each month, £1 admission includes refreshments. For further information contact Joan Webb, 335518.

All very welcome.

CHRISTLETON METHODIST CHURCH

We meet for Informal Prayers and a Simple Lunch on the first Thursday of each month at 12 noon. All welcome.

There is no charge for the lunch but a donation to cover costs would be appreciated.

CHRISTLETON W.I.

Meets on the second Wednesday of the month at 7.15 pm in the Parish Hall.

CHESTER FLOWER CLUB

Meetings are held in Christleton Parish Hall on the 3rd Wednesday of the month at 1.30pm. Details of any events

can be obtained from the Secretary, Mrs Edna Ellis telephone Chester 346497.

CHRISTLETON W.I. MONTHLY WHIST DRIVE

Meet in the Parish Hall on the last Wednesday of the month at 2pm.

All welcome.

CHRISTLETON GARDEN CLUB

The next meeting will take place on 12 February 2007 – 'Highgrove' film.

MAGAZINE DISTRIBUTORS

The February magazine will be available for collection from Church on Sunday 25 February 2007.

LOCAL EVENTS DIARY

CHRISTLETON RAMBLING GROUPS



**St James' Tuesday Walking
Group.**

Tuesday February 27th

Llangollen; Valle Crucis Abbey /
Eglwysig Rocks /Canal & Mountain
Tracks

7 miles (Grade moderate+)

Pub Lunch

Depart Church Car Park at 8.00am

Details from David Cummings

332410

Christleton Local History Group. at Christleton Primary School

**Wednesday February 28th
7.30pm**

Chester Canal Boats.
Speaker; Geoff Taylor
from Taylor's Boat Yard in Chester.
Admission £2 including a glass of
wine/soft drink and nibbles.
All welcome.

MOTHERS UNION

Our next meeting will take place
on Monday, February 12th
at 2.00pm in the Parish Hall.

The speaker will be Canon Chris
Samuels,
who will talk about the current crisis
facing Christians in Bethlehem.

Christleton Wednesday Group

SOUP & SWEET
SPRING LUNCH

Wednesday 14th March

Christleton Parish Hall

12.00 noon

In aid of Children's Chronic
Arthritis Association

Tickets £6.50

(available from Members)

includes a glass of wine

MAGAZINE CONTRIBUTIONS

Please ensure all items for inclusion in the February edition are sent
to the Rector, Peter Lee at the Rectory, Birch Heath Lane, as soon
as possible **BEFORE Friday 9 February** or you can e-mail this to

christletonmag@hotmail.co.uk

LEPROSY MISSION

Stamp out leprosy!

Please donate your used stamps so that money can be raised for Leprosy Mission. Stamps should be trimmed to quarter inch border around the stamp, and can be left at the back of Church.

PLEASE TELL US...

If you know of any special birthdays, anniversaries or anyone celebrating a special occasion, who is a Parish Magazine reader, please inform the editor, David Bull.

AVAILABLE AT ST JAMES CHURCH

"Loop" system, for the hearing impaired
Large print books for the visually impaired
& large print weekly notice sheets
Easy to follow Communion Service
Books for children
Access for wheelchairs
Please ask any of the Churchwardens or Sidesmen if you need assistance in any way.

CHRISTLETON UNDER-FIVES

COMMUNITY PLAYGROUP

Registered Charity 1022817

Christleton Under Fives is an established pre school playgroup attracting children from a wide area. It enjoys good and well founded links with Christleton Primary School. Children from the age of 2 1/2 years until school age are accepted. Please contact the Supervisor, Carole Penny, on 336586 for further details.

MOBILE LIBRARY VAN SERVICE

The van calls weekly: alternate Thursdays all day and alternate Fridays in Quarry Lane 11.15 am – 12.45 pm. For further details of when the van is next in your area, please telephone Upton Library on 380053.

READERS

Please remember to support our magazine advertisers and mention where you have read their name.

CONTRIBUTORS

The best way to send contributions to St. James' Parish Magazine is to e-mail the document.

Attach your Word document and e-mail it to

christletonmag@hotmail.co.uk

Parish Registers for December 2006

The Wedding Service

16th Jonathan William Divers & Elizabeth Louise Hargreaves
36 Wykham Lane, Bodicote, Banbury, Oxfordshire

“Those whom God has joined, let not man divide”

The Funeral Service

4th Barbara Smith Rowton House 1 Claypits Lane, Rowton
20th Tristan Oscar Cook Maple Lodge 21 Littleton Lane, Littleton
21st Dominic William Arnold 8 Private Walks, Dee Banks, Boughton

“ Grant them eternal rest ”

Offertories

December	Cash	CSE	2006	2005
3rd	769-63	686-00	1455-63	925-30
10th	430-95	628-50	1059-45	972-64
17th	377-51	988-90	1366-41	1329-68
24th	1983-04	998-50	2981-54	2564-71
31st	155-96	596-00	751-96	660-75
Totals			£7,614-99	£6,453-08

“Of your own do we give you.”