



DECEMBER 2019
&
JANUARY 2020

Sharing  *God's Love*
ST JAMES' CHURCH, CHRISTLETON

Double issue
£1



Jesus:.. is God's gift of love to us:

.. is the Light of the World:

.. illuminates the path back to God:

**.. enables all of us to have life in all
 its fullness Now and always.**



**Happy Christmas and New Year
 from St James' Church**

PARISH MAGAZINE

Christmas is Coming

I have just returned from spending some time with Jesus at Rydal Hall in the Lake District. Time which included some teaching about Celtic Christianity. If you're wondering what this is exactly you are not alone. Ian Bradley apparently wrote the definitive textbook, and in its latest and substantially revised incarnation (Following the Celtic Way: A new assessment of Celtic Christianity) he writes "when I use the term 'Celtic Christianity'..I am applying it to the native, indigenous Christian faith practised by those living in the British Isles in the early mediaeval period, and more specifically in those 'Celtic' speaking areas – the lands that would become Ireland, Scotland, and Wales and also certain parts of England, notably Cumbria, Cornwall and other western areas before they were overrun by Angles, Saxons, Jutes, and Vikings".

With this definition out of the way, I was interested to learn something of about the nature of pilgrimage in the Celtic tradition. It's another rich term, and I wonder what you call to mind when you hear it. In Celtic pilgrimage, it was explained to me (though I have read something quite different a few days ago), you

walk with the intention of, say, visiting a pilgrimage cross of a Saint you want to know better, with the desired result being that you finish the pilgrimage carrying with you something of the quality of the Saint. During the pilgrimage you may read a gospel, the life of the Saint, reflect on the qualities of the Saint, and mull these things over with any fellow pilgrim and even the Saint themselves. Upon reaching the cross, prayers would be said, then you would dedicate yourself to living in the light of this quality through, e.g., a piece of Scripture.



It's been a useful reminder to me, as I hope it may be to you, as we enter the seasons of Advent, Christmas, and Epiphany covered by this magazine edition. For focussing on Advent this time (I have a lot of these magazine articles to write in the coming years!), we remember that we too are encouraged to undertake Advent pilgrimages of faith. Pilgrimages, walking literally or metaphorically, with God and his people, focussed on the coming of Christ; celebrating the coming of Christ in his birth, and the coming of Christ as judge at the end of time.

(continued on page 3)



Serving the communities of:
Christleton, Cotton Abbots, Cotton Edmunds, Littleton and Rowton.



PARISH CONTACTS:

RECTOR:

Rev'd Dr Stefan Collier

Tel: 01244 335663

rector.christleton@gmail.com

(PLEASE NOTE: The Rector has changed his day off
- it is now normally on Saturday)

OTHER CLERGY IN THE PARISH:

Rev'd Gill Hibbert Tel: 01244 336544

gillianhibbert582@btinternet.com

Rev'd Elizabeth Inall Tel: 01244 336500

elizabeth@inall.co.uk

CHURCHWARDENS:

Bettie Gilliatt Tel: 01244 335645

Tina Lightfoot Tel: 07557 352592

for either warden:

churchwardens@stjameschristleton.org.uk

(Please note that this is a new email address)

MUSICAL DIRECTOR:

Hannah Williams

Tel: 01244 675578 or 07399 147664

stjamesmusicmatters@gmail.com

PCC SECRETARY:

Janet Milton Tel: 01244 325529

pccsecretary@stjameschristleton.org.uk

PARISH ADMINISTRATION:

(including the Weekly Notices)

Marj Keech Tel: 07487 642912

office@stjameschristleton.org.uk

PARISH HALL BOOKINGS:

Maria Norbury Tel: 01244 335499

maria_norbury@btinternet.com

Also: enquiries & bookings online via website.

WEDDINGS, FUNERALS AND BAPTISMS:

Initially use the enquiry forms via the church website, or please contact the Parish Administrator or the Rector.

VERGER:

John Milton Tel: 01244 325529

MAGAZINE:

EDITOR:

The editor is: **Brian Inall**

Tel: 01244 336500 brian@inall.co.uk

Deadline for submissions for the February 2020 magazine will be: **Monday 13th January.**

COMMERCIAL ADVERTISING:

John Eccles

Tel: 01244 336355

jeccles46@sky.com

DISTRIBUTION & SUBSCRIPTIONS

Joce Platel

Tel: 01244 332466

chrisandjoce@hotmail.co.uk

The Magazine subscription is currently £6 per year and runs from April to March. Subscribers have a copy delivered, or they may collect from church, and electronic delivery is also an option. If you don't subscribe then you are invited to buy individual copies each month from the back of St James' Church. If all the spare copies have gone then please ask - we will be pleased to help.

Thank you for reading our magazine. We hope you enjoy it. Feedback is always welcome so please let the editor know what you think about the magazine. Contributions are welcome and more details about this are available from the editor.

Do also look at our church website for back copies of this magazine and more information including a 'live' calendar.

ST JAMES' CHURCH WEBSITE:

<https://www.stjameschristleton.org.uk>

ST JAMES ON TWITTER:



@StJChristleton

CHRISTLETON VILLAGE WEBSITE:

www.christleton.org.uk

Do you wish to support St James' Church with a donation?

No cash?
No Problem



CARD IT!
£5, £10 or £15

You'll find the Contactless Card Terminal at the back of the church. Please ask if you need help using it.

(continued from front page)

This is no easy task for us amidst the whirlwind of busyness, financial pressures, shopping, isolation, and parties that may or may not come our way this Advent and Christmas especially. But it is, I suspect, a task we would be wise to face head-on as churches – communities of God's people – today. For to go with the cultural flow, and squeeze in and around it any Advent pilgrimages will render them largely meaningless and ineffective. While on the other hand, to make our reflective journeys a priority, e.g., focussing on, say, the life's of St John the Baptist, St Mary, St Joseph, and or Jesus Christ or using the ROOTS Advent family resource (detailed in this issue - see pages 8 & 9) in the run up to **Christmas**, has the potential to afford real transformation which lasts, and gifts us presents we cannot buy or achieve for ourselves – real and eternal life, more and better life than we may ever dream of, to paraphrase St John.

So, this, as you might reasonably expect, is my prayer for us this Advent; that we may know the abundance of blessings God desires to pour our upon us should we dare to make space to receive them. And when it comes, **Christmas**. May I, on behalf of the parish community, wish you a very Happy **Christmas**, and extend to you a very warm welcome to any of our services or events during these blessed seasons of Advent, **Christmas**, and Epiphany.

With my love and prayers,

Stefan

ST JAMES' CHURCHYARD:

We have a wonderfully large churchyard, many yew trees are dotted around, particularly in the older section of the grounds. Wild flowers are found in abundance in spring and early summer. It is essentially a quiet place, pleasant to sit in and to reflect.

Maintenance of such lovely grounds is demanding. Fortunately, we are blessed with the services of a community payback team led by our good friend Val Barker. The team usually appear every Saturday and sometimes mid week. Grass is cut, weeds strimmed, paths weeded and edged and lots more depending on what Bettie has in mind! We make the occasional donation of equipment to help cover costs.

Once a month there is a parish churchyard working party. We work alongside the payback team and then share a lunch of soup, bread, cheese, brownies and cake. If the weather is good we eat in the churchyard, indoors if wet. One volunteer describes it as the 'St James churchyard alfresco dining society'

We are always on the look out for people to join us. You don't have to be a churchgoer, or live in the village, please just turn up! Dates can be found in the parish magazine, church noticeboards or website.

St James' churchyard helps enhance the look of the village, it is a focal point for worship, for contemplation and for visitors to explore. If you can, come and donate a little of your time once a month on a Saturday. You will be made most welcome.

Mike Lightfoot.

MESSY CHURCH:



It was super to welcome back both parents and children to our November Messy meeting, the first get together following the October harvest celebrations in church.

Having explored the adventures of Jonah in our September Messy, who you remember ended up inside a whale, we decided to look at another exciting Old Testament story; This time the story of Shadrach, Meshach and Abednego, *The Men Who Liked to Say No!* To set the scene our craft activities included painting pictures of a gold statue, making regal crowns, a fiery flame collage, decorating angels and YES/NO paddles, (imagine you are a Strictly Come Dancing judge!)

In our Worship time, Jan expertly narrated the story of Daniel chpt 3 from The Lion Storyteller Bible. There were plenty of opportunities for audience participation. Joining in with percussion instruments children and parents became both the band and the crowd who were too frightened to say No!

They bowed down to worship the Gold Statue and said YES to a rather stern, frightening King Nebuchadnezzar (Beryl) to throw the three men into the fiery furnace. No-one defied the King's orders, apart from the three

men from Jerusalem. Looking closely at the collage we could just make out the outline of an angel, the fourth person in the fiery furnace. Yes! God had saved the men from the fiery furnace and Yes! King Nebuchadnezzar recognized the One God! Yes, a happy ending!

The music group played a lively action song about Meshach, Shadrach and Abednego, another opportunity to play the musical instruments. We finished with prayer and joined together saying the Messy Grace, before sharing a delicious tea, including a fiery furnace cake! Thank you Betty, Sue, Maria and Anna, the Messy Cooks.

The Messy Team

DEANERY SYNOD

The Deanery Synod meeting took place at St. Peter's Duddon on 11th November 2019.

It was interesting to see how this small church has been refurbished to include a small but efficient cleverly concealed kitchen, comfortable and adaptable seating and new carpet tiles – at a cost of £80,000. The work was completed in 2011.

It was lovely to be welcomed by Barbara King who many will remember from her time as Curate at St. James. She is now at Tarvin – Duddon being part of that parish.

The theme for the evening delivered by the Archdeacon, the Venerable Michael Gilbertson, was a new national initiative "Setting God's People Free" - arising from a recent Synod agreement.

The focus is on laity and clergy working together confidently Monday to Saturday, not just as the "gathered" Church on Sundays. It is noteworthy that 98% of people in the Church of England are not ordained and this initiative attempts to explore how laity and clergy can re-organise their equal status to work in partnership to implement the work of the Church outside Sunday worship, where most Christian encounters actually occur.

We were asked to think what can be done to ensure that lay people play a full part alongside the clergy in the life and ministry of the Church. There is a need/desire to equip lay people to follow the teachings of Jesus confidently in every sphere of life.

There is a connection between faith and ordinary life which needs to be brought to greater recognition – rather than just being assumed. We should work together confidently as baptized equals and disciples to renew purpose and vision within the community – in what might seem to some as a complete culture change.

For further information see <https://www.chester.anglican.org/content/pages/documents/1490110088.pdf>

Joce Platel and Bettie Gilliatt

MAINTENANCE UPDATE

A protective polycarbonate covering has been placed recently on the large stained glass window in the main hall. This will provide protection from rainwater coming in through the window which is bowed. Replacing the window itself would have been prohibitively expensive.



A survey of the trees in the Churchyard was completed recently by a specialist company. It is some considerable time since trees were pruned and it is hoped to implement the recommendations when permission is granted from the Diocese and Tree Warden. The church grounds are in a conservation area and tree work has to be approved.

Churches undergo a five-yearly inspection by an architect approved by the Diocese and the recommendations are expected to be carried out by the time of the next inspection. The last Quinquennial for the Church was done in 2017 and the next inspection is due in 2022.

Various masonry and pointing repairs were highlighted as necessary to the Church to keep the building in good order and preserve it for the future – not an easy task with soft sandstone. In particular, on the lych gate, water has penetrated and rotted a section of the oak roof. Repairs on the fabric of buildings like this have to be carried out by specialist masons who are usually in great demand due to their scarcity and skills. We hope to be able to implement these repairs fairly soon.

The Church bells are also in great need of a major overhaul – the last refurbishment was in 1928!! Many

churches unfortunately have had to silence their bells but we are hopeful that we will be able to continue to have the bells rung for a long time still. We have a small but dedicated company of bell-ringers who ring for many occasions and practice each Tuesday evening.

The Churchyard continues to be diligently looked after by the Community Payback team to whom we are very grateful. They turn up each Saturday throughout the year except in the most severe weather and they do a wonderful and much appreciated job. They have repaired most of the fence along the public footpath and painted the railings outside the Parish Hall. The state of the Churchyard has undoubtedly played a part in Christleton's nomination for Best Kept Village. Once a month there is a volunteer party helping in the Churchyard working alongside the Payback team. A lunch is provided for all and anyone is welcome to come along to help – no gardening experience is necessary! Dates can be found in the Magazine calendar and the website.

An annual inspection of the Church roof, valleys and gutters has been put in place – following some emergency repairs in the last couple of years. Hopefully, this will pre-empt such expensive repairs by highlighting any potential problems particularly in view of recent weather patterns.

We acknowledge that the upkeep of the Church, the Hall and the grounds would not be possible without the generosity of both St. James' congregation and the people of the Parish (Christleton, Littleton, Rowton, Cotton Edmunds and Cotton Abbots). Thank you.

Bettie Gilliatt

A REST UPON THE WAY

Time was when travelling Britain's motorways was a regular activity for me. How relatively easy it was to journey between the north and south of the country. If your experience of the British landscape was limited to what you saw from the motorway, you would believe that, for the most part, Britain was essentially countryside punctuated by the odd farm buildings and distant church spires, with the M6 through Birmingham providing a jarring exception and an example of the urban conurbations that existed elsewhere.

The bucolic view of Britain's landscape arises because the motorways were built long after most of the roads

in the rest of the country. Of necessity the routes had to avoid existing built-up areas, opting instead for routes through undeveloped countryside. When this involved trespassing on national parks or areas of outstanding natural beauty controversy was inevitable. The first motorway was the Preston Bypass built in 1958 and this was followed in 1959 by the first stage of the M1 between the present junction 5 (Watford) and junction 18 (Crick/Rugby).

In the early 1960s, my in-laws were living in Hertfordshire near the southern end of this first section of the M1. One sunny Sunday evening while visiting them, three of us decided that we would like to experience this new motorway and in particular visit a service area. I had recently acquired a Morris Mini van, pale green in colour, 848cc engine with a four speed gear box, crash on the first gear. In those days many motorists bought vans to use as a private car because the tax element of the total purchase price was lower. Such vehicles had only two seats and where the third person "sat" during that excursion I will leave as "unexplained" - to use the appropriate police jargon. The road was quiet on that Sunday evening. We travelled north and turned off into the Watford Gap service area which is some 3 miles before the motorway ended. I have no memory of the buildings or facilities that existed at that time except that apple pie was available. Previously my sister-in-law had claimed not to like it but she certainly enjoyed it that evening.

It was originally envisaged that Watford Gap, also known as the Blue Boar, would operate as a truck stop with a later development to the south at Newport Pagnell providing the service for cars; but that quickly changed. Despite the name, Watford Gap is nowhere near Watford. It occupies a special place in the topography of England; it is regarded as the boundary between the north and the south.

Today I don't make long journeys on motorways often and, like most users, have forgotten the pleasure of that first acquaintance when "unrestricted speed" meant what the words would suggest - not that that was an issue for my small van! Rather I expect overcrowded routes, overbearing commercial vehicles, crawling at peak times, time spent stationary and the special challenge of driving in wild weather and very possibly the sight of vehicles so damaged in accidents that it is difficult to decide what they were originally.

A welcome escape from this mayhem was always the service stations, although they have not been without their critics. A recent decision to drive to the south

coast brought back memories of those experiences on motorways and the escape that the service area had often provided. I kept thinking of the words (and tune) of an old hymn:

"A home within the wilderness, A rest upon the way,
From the burning of the noontide heat,
And the burden of the day."

It's a big leap to relate Elizabeth Clephane's mid 1800s poetic images to the refuge offered by a motorway service station but that is what happened. So what is this hymn actually about? It begins:

"Beneath the cross of Jesus I fain would take my stand-"

Now that is something much more significant and challenging than my journeys on motorways.

Jim Hawkes

TREASURER'S HAPPY CHRISTMAS:

Well what an exciting year this has been!

My financial information is only until the 31st October due to the deadline for this article. The bottom line is that our regular giving is stable, and we have had the benefit of the legacy in late September so I am certain that over the year we will not be in overall deficit.

Despite our spending on the parish hall and the new equipment in church, if we omit the legacy our expenses have exceeded our income by £731 per month, so in this case there is a deficit in the regular income and expenditure. It is for this regular expenditure on the ongoing expenses of running this parish that we are considering how best to launch a renewing of stewardship responsibility in the New Year. We can do so many wonderful things in our community and indeed we do – but it all needs resourcing and even maintaining the historic beautiful building that we have takes regular finance.

There is great generosity in our community for which I am eternally grateful – thank you all so very much for all your support this year in so many ways.

Last year my Christmas present was a contactless terminal – I am delighted to say this is beginning to come into its own and is giving more income than its rental – to date £297 since the end of March and there were prolonged teething problems.

I nearly forgot to tell you of my other excitement..... While being obsessively careful to check the counting of 49 5p pieces in a bag – don't you hate the way these tiny coins fall out of your hand onto the floor!? - I discovered the silver fourpence seen in these pictures, masquerading as a 5p.

I immediately called to my son and raced to the computer. After some difficulty, we discovered that this 4d was Maundy money – depending on what site was searched it was worth from £5 to 130 euros. So I wanted to share this excitement with you, as I personally have never in 71 years seen a silver fourpence!



A very happy Christmas and New Year to you all.
Liz McClure

MORNING PRAYER:

If you look at the recent weekly notices and this magazine (p2) you'll see that our Rector now generally takes Saturdays off, instead of Thursdays.

This means that Morning Prayer now takes place every weekday, including Thursdays. It will probably happen even if Stefan is away as other folk can lead it. It's a good start to the day.

(Editor)

WEEKLY NOTICES

Marj Keech now does the Weekly Notice Sheet, or Pew Sheet, as part of her Parish Admin work. Please note that she wishes to have input (updates & new notices) by the Tuesday before the weekend of publication. (Not Wednesday as it used to be.)

Please remember this so that your notices get in.
See Marj's contact details on page 2.

CHRISTMAS MEMORIES FROM 1987

Many older members of the congregation will remember the impact 5 young ladies from Northern Kashmir on the Tibetan border made on the village at Christmas 1987.

Gertrude Wright had founded and worked at St James' English Medium School in Shey, near the capital Leh, Ladakh, and the opportunity arose for her to bring these delightful young ladies over to Christleton for four months in 1987.

Anju, Bilques, Ruth, Bimla and Ruth Mary brought great joy to the village, taking part in many Christmas activities, performing songs and dances from this remote part of the western Himalayas, at the Primary School Christmas concerts, in the old W. I. Hall and at St James' church.

During their stay the Cummings family & Gertrude took them to the Lake District, and when I proudly showed them Helvelyn, I was greeted by Bilques saying, "But Mr Cummings you said you were taking us to the mountains!" We stayed for the weekend at Derwentwater Youth Hostel and they were excited to see a waterfall completely frozen over in the grounds, whilst on a walk to Ashness Bridge.



Derwentwater, a very large body of water in the northern Lakes, was itself completely frozen over. The girls also taught us to sing "We shall overcome" in Hindi as we drove up to the Lakes.

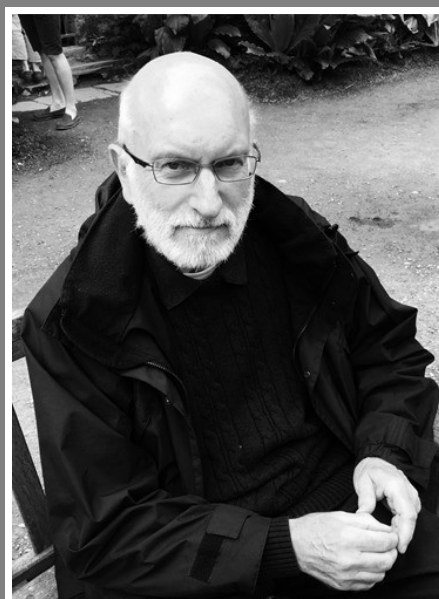
Three of the girls attended the Primary School, and the older two the High School, although they did like being together in the Primary School in the afternoons. They took part in all school activities, including swimming at the Christleton Pool, to their great amusement, as they

had never worn a swimming costume before, or even been in a pool. (They normally washed their hair and swam in the River Indus, near their school.) They also used to collect and carry "jerry cans" of water for their families use before going to school each morning, and would also be sent to grind corn in the local mill if their mothers wanted flour.

They were all excellent mathematicians and the older girls were well above the standard expected for their age. It was a great joy to have them in the village and to share our lives with them even for a short time. Lasting friendships were made and some of their classmates from Christleton are still in touch with them. The picture shows them with the Crib at St James that Christmas.

David Cummings

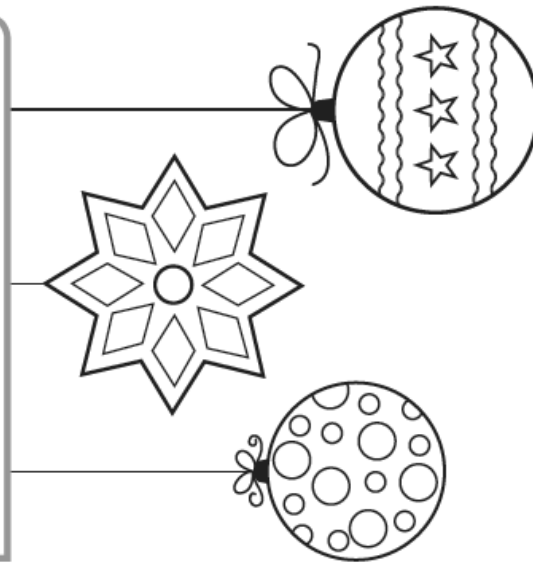
RIP - TIM ROWE
14/10/1945 - 27/10/2019



Linda and Jess would like to sincerely thank all those who attended Tim's funeral and who sent cards and messages of sympathy. Tim would, in his quiet way, have been very proud that so many had thought of him.

Here are some ideas that you can use as a family to make Advent a special time of preparation and expectation for what is to come at Christmas – alongside being a time for pre-Christmas shopping and parties!

Each of the four sections is linked to one of the Sundays in Advent – either to its theme or Gospel reading – but they can be used in a variety of different ways and contexts. For example, time could be set aside once a week for the family to come together to explore the ideas, or they could be part of a daily routine at, say, a mealtime. Use them as best suits your family and circumstances.



Advent 1

1 - 7 December 2019

By the tender mercy of our God, the dawn from on high will break upon us, to give light to those who sit in darkness (Luke 1.78-79a).

Light is a powerful symbol, especially at this time of year. Its coming and going marks the passage of time. It is also a sign of hope; for Christians it speaks of the coming of Christ, the light of the world.



Advent candles

Do

Make time each day of Advent (or just this first week) to light a candle. You could use an Advent wreath, or light candles or tealights before a family meal. You could link this with a chocolate Advent calendar – light a candle and eat a chocolate!

Reflect

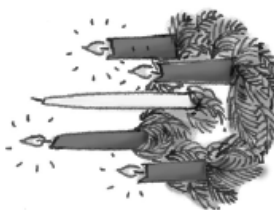
Use the opportunity to reflect on significant moments in your life – or 'hinges' in time – that have particular meaning for you and signalled a change or an opportunity. Just one or two each day will build to a significant story over the course of Advent. Not every moment will necessarily be happy, some may mark loss, adversity or pain.

Talk

As you note all of these 'hinge' moments, how do you respond – with thanks? ... with sadness? ... with forgiveness? Do you recognise the presence of God in any of these moments? Discuss these questions together.

Pray

God of past, present and future, be the light which guides us on our journeys, which illuminates our understanding, and which shines through us as a beacon of hope for others. Amen.



Advent 2

8 - 14 December 2019

Prepare the way of the Lord, make his paths straight... and all flesh shall see the salvation of God (Luke 3.4b, 6). Writing Christmas cards (or sending Christmas emails) reminds us of those whose paths have crossed ours at an earlier time in our lives.

A network of greeting

Do

Use a map to mark all the places where you will be sending greetings this Christmas. You could use pins and threads of different colours to link your location to those of family and friends who will receive your greetings; the resulting network of contacts is a physical representation of love, remembrance and value.

Connect

How could you make new connections during Advent?

If you use social media, use it to spread positive messages to a wider audience. Could you send cards or messages to victims of injustice through Amnesty International, to refugees far from home, or to fellow Christians elsewhere in the world?



Pray

God of the journey, we thank you for the network of relationships we treasure at this time of year. Give us hearts to send your love ever wider into the world, taking our small part in helping 'all people to see the salvation of God'. Amen.

Advent 3 15 - 21 December 2019

And the crowds asked him 'What then should we do?' In reply he said to them 'Whoever has two coats must share with anyone who has none; and whoever has food must do likewise' (Luke 3.10-11).

All the activities of the Christmas period can be a wonderful expression of the deep connection, love and celebration we share with others. But at times, many of us also find the expectations of lavish spending and overindulgence to be distractions and burdens.

The alternative Christmas

Do

As an antidote to seasonal excess, write an alternative 'wish list' of things you would like to do, or contribute towards, to respond to Christ's presence in the world. You could do this individually and then share your lists with each other. Or together you could create a family list. This could form the basis for New Year resolutions.

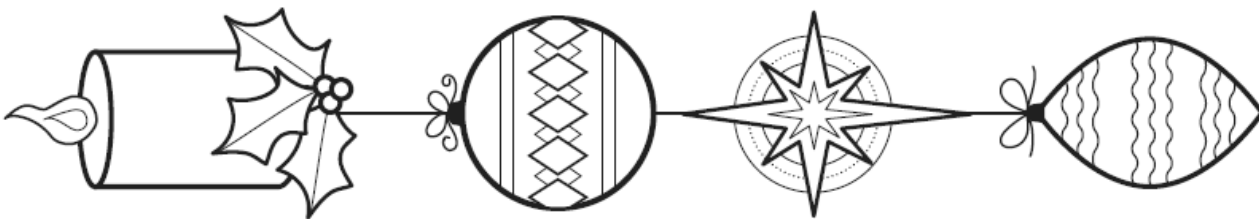
Alternatively – or in addition – if you buy gifts, could you consider the alternative gift ranges offered by many charities? If you cook, could you contribute to a Christmas meal for the lonely or homeless in your community? If you attend school or community events, can you invite elderly, isolated or lonely neighbours to join you, or organise to go carol singing and instead of collecting money, give out chocolates with a Christmas greeting to those you visit?

Reflect

How can you can support each other in realising together the aspirations expressed in your list(s)?

Pray

Lord God, when the pressures of the season lead us away from you, guide our thoughts and actions back to the simple manger and the gift of life and hope for all people.
Amen.



Advent 4 22 - 28 December 2019

When Elizabeth heard Mary's greeting, the child leapt in her womb. And Elizabeth was filled with the Holy Spirit and exclaimed with a loud cry, 'Blessed are you among women' (Luke 1.41-42).

DIY nativity

Do

Draw, or make, or use an existing set, of nativity figures to think about all the characters involved in the nativity story. You could have fun finding objects or figures to represent characters who are not usually included (e.g. Mary and Joseph's family and neighbours).

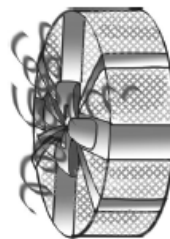
Retell the nativity story, allowing your imagination to explore the feelings of the characters involved and any concerns they might have faced. Different members of the family or group could tell different parts of the story – the thoughts of teenagers in relation to Mary might be particularly valuable.

Reflect

Does the story remind you of any of your own experiences? Or of people who have played a significant part in your life? When you finish the storytelling, take a moment to think about where the light of the world is shining in your life right now.

Pray

Lord Jesus, son of Mary, recognised by Elizabeth, loved by Joseph, welcomed by strangers, nurtured by family, bless the bonds which tie us to those around us and bring joy and understanding to those relationships which are hard.
Amen.



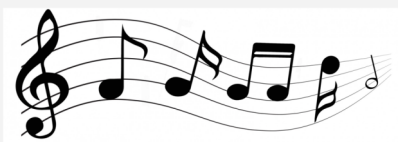
ANNUAL SERVICE OF NINE LESSONS & CAROLS:

This is at 6.30pm
on Sun 22nd December.

Under the musical direction of
Hannah we shall all sing great carols
with the support of the choir.

Note that it is at the traditional time
of 6.30 pm so those candles should
shine brightly in the darkness!

Let us sing to
the Lord!



ANNUAL TOY SERVICE:

This is at 10.45am
on Sun 8th December.

Please consider bringing wrapped new toys
labelled up as suitable for a girl/boy/either
and a suggested age range.

These toys will be distributed to children
who otherwise would not get anything by a
local charity.

Thank you.



CRIB SERVICE

**4pm on CHRISTMAS EVE
St James' Church**

**A short ½ hour service around
the crib for the very young,
their families and friends.**

**Telling the Christmas story
with songs and activities.**

Some dressing up! (optional)



*Swing your
partner*

*at a Burns
Night Ceilidh
in the Parish Hall*



Sat 25th Jan, 7pm—11pm

Supper provided

(bring your own drinks)

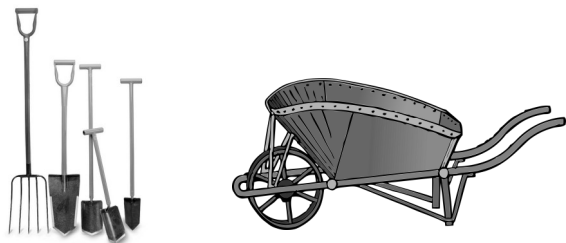
Live band & lots of fun

Tickets £15

(also kids & family tickets)

from Joce Platel (332466)

Fundraiser for St James' Church



Churchyard Maintenance

Next:

Saturday 7th December
(January dates to be advised)

Once a month at 10.30am we hold a working party to help maintain our church yard. If you would like to join us just come along in old clothes with gloves and basic gardening tools (not essential). For further information please contact:

Mike Lightfoot - Tel: 07787 421357



CHRISTLETON PARISH HALL

Available for :

Meetings, Parties, Functions, etc.
The Hall has wheelchair access and specially adapted facilities.

Our new Parish Hall Bookings Secretary is Maria Norbury: Tel: 01244 335499.
maria_norbury@btinternet.com

You can also make initial enquiries and bookings via the church website.

<https://www.stjameschristleton.org.uk>



Messy Church

Next Messy Church is:
15th December
at 4pm in the Parish Hall.

(Future dates: 19th Jan; 16th Feb.)



Week of Prayer for Christian Unity

January 2020—United Services & prayer

Sun 19th: 3.30pm. Chester Cathedral
Mon 20th: 12 noon. Waverton Evangelical
Tues 21st: 12 noon. St James, Christleton
Wed 22nd: 12 noon. St Peter's, Waverton
Thu 23rd: 12 noon. Christleton Methodists
Fri 24th: 12 noon. Rowton Methodists
Sat 25th: 12 noon. St Werburgh's, Chester
Sun 26th: 7.00pm. Christleton Methodists
(all followed by refreshments & fellowship)



ESTABLISHED 1984

- WEDDING STATIONERY • NEWSLETTERS
 - BROCHURES • MENUS • POSTERS • INVITATIONS
 - FUNERAL STATIONERY • NCR BOOKS, SETS & PADS
 - BUSINESS STATIONERY and much, much more...
- CARD PAYMENTS ACCEPTED FREE LOCAL DELIVERY

Tel 01244 314 849 Mob 07546 276 575 Email enquiries@devaprintchester.co.uk

www.devaprintchester.co.uk

Sutton House, Guilden Sutton, Chester CH3 7EY

St James' Church Calendar

December, January & February

DECEMBER:

Every weekday **Monday to Friday:** 9am: Morning Prayer (Note: now includes Thursdays)
 Every **Thursday: 4pm-5pm:** Church Band rehearsal; **5pm-6pm:** Church Choir rehearsal.

- Sunday 1st:** from 8am: Parish Breakfast in the Parish Hall.
(Advent 1) 9.00am: Holy Communion. Refreshments after in Parish Hall.
 10.45am: Morning Worship. Refreshments.
 4.00pm: Christingle Service.
- Tuesday 3rd: 7.30pm: Weekly Home Discussion Group. (Sandheys, Plough Lane. Tel: 332466)
 Wednesday 4th: 10.45am: United Holy Communion (Churches Together). Refreshments.
 Saturday 7th: 10.30am: Churchyard Working Party.
 10.30am: Wreath Making workshop with lunch in Parish Hall. (see ad page 15)
 2.30pm: Christmas craft & produce sale in Parish Hall. Open to all. Refreshments
- Sunday 8th:** 9.00am: Holy Communion. Refreshments after in Parish Hall.
(Advent 2) 10.45am: Annual Toy Service. Please bring wrapped new toys marked up with suitability for boy/girl/either and suggested age range. Refreshments.
 4.00pm: Evening Prayer (BCP).
- Tuesday 10th: 7.30pm: Weekly Home Discussion Group. (Grange House, Village Road. Tel: 336500).
 Wednesday 11th: 10.45am: Holy Communion (BCP). Refreshments.
 Thursday 12th: All Day Parish Hall out of use as it's being used as a General Election polling station.
- Sunday 15th:** 9.00am: Holy Communion. Refreshments and Produce Sale.
(Advent 3) 10.45am: Morning Worship with Communion. Refreshments.
 4.00pm: Messy Church in the Parish Hall.
- Monday 16th: 12.30pm: Luncheon Club in the Parish Hall. (Christmas Lunch)
 Tuesday 17th: No Home Discussion Group. Restarts 7th Jan. at Sandheys.
 Wednesday 18th: 10.45am: Holy Communion (BCP). Refreshments.
 Thursday 19th: 2pm & 6.30pm: Christleton Primary School Christmas services.
- Sunday 22nd:** 9.00am: Holy Communion. Refreshments after in Parish Hall.
(Advent 4) 10.45am: Morning Worship. Refreshments.
 6.30pm: Service of Nine Lessons & Carols. Seasonal refreshments.
- Tuesday 24th:** 4.00pm: Crib service. A short ½ hour service for the very young. (see ad page 10)
(Christmas Eve) 7.00pm: Carols Around the Tree. Outside if weather permits. Refreshments.
 11.30pm: Holy Communion.
- Wednesday 25th:** 9.00am: Holy Communion. Refreshments.
(Christmas Day) 10.45am: Morning Worship for Christmas Day. Refreshments.
- Sunday 29th:** 9.00am: Holy Communion. Refreshments after in Parish Hall.
(Christmas 1) 10.45am: Morning Worship. Refreshments.
 4.00pm: Taizé Service.

JANUARY 2020:

Every weekday **Monday to Friday:** 9am: Morning Prayer (Note: now includes Thursdays)
Every **Thursday: 4pm-5pm:** Church Band rehearsal; **5pm-6pm:** Church Choir rehearsal.

Wednesday 1st: 10.45am: United Holy Communion (Churches Together). Refreshments.

Sunday 5th: from 8am: Parish Breakfast in the Parish Hall.
(*Epiphany*) 9.00am: Holy Communion. Refreshments after in Parish Hall.
10.45am: Morning Worship. Refreshments.
4.00pm: Young Person's Service.

Tuesday 7th: 7.30pm: Weekly Home Discussion Group at Sandheys, Plough Lane.

Wednesday 8th: 10.45am: Holy Communion (BCP). Refreshments.
7.15 pm: Open WI meeting about Chester's Street Pastors. Parish Hall. All welcome.

Sunday 12th: 9.00am: Holy Communion. Refreshments after in Parish Hall.
(*Baptism of Christ*) 10.45am: Morning Worship. Refreshments.
(*Epiphany 1*) 4.00pm: Evening Prayer (BCP).

Tuesday 14th: 7.30pm: Weekly Home Discussion Group. (venue to be advised)

Wednesday 15th: 10.45am: Holy Communion (BCP). Refreshments.

Sunday 19th: 9.00am: Holy Communion. Refreshments and Produce Sale.
(*Epiphany 2*) 10.45am: Morning Worship with Communion. Refreshments.
3.30pm: Chester Cathedral. An ecumenical service to start the Week of Prayer for Christian Unity. *
4.00pm: Messy Church in the Parish Hall.

Monday 20th: 12 noon: Week of Prayer for Christian Unity. Waverton Evangelical Fellowship. *
12.30pm: Luncheon Club in the Parish Hall.

Tuesday 21st: 12 noon: Week of Prayer for Christian Unity. St James' Church, Christleton. *
7.30pm: Weekly Home Discussion Group. (venue to be advised).

Wednesday 22nd: 10.45am: Holy Communion (BCP). Refreshments.
12 noon: Week of Prayer for Christian Unity. St Peter's Church, Waverton *
7.30pm: PCC meeting.

Thursday 23rd: 12 noon: Week of Prayer for Christian Unity. Christleton Methodist Church *

Friday 24th: 12 noon: Week of Prayer for Christian Unity. Rowton Methodist Church *

Saturday 25th: 12 noon: Week of Prayer for Christian Unity. St Werburgh's Church, Chester *
7.00pm: Fund raising Ceilidh and Supper in the Parish Hall. See ad page 10.

Sunday 26th: 9.00am: Holy Communion. Refreshments after in Parish Hall.
(*Epiphany 3*) 10.45am: Morning Worship. Refreshments.
4.00pm: Contemplative Communion Service.
7.00pm: To conclude the Week of Prayer for Christian Unity
a joint Churches Together service at Christleton Methodist Church. *

Tuesday 28th: 7.30pm: Weekly Home Discussion Group. (venue to be advised)

Wednesday 29th: 10.45am: Holy Communion (BCP). Refreshments.

* You are invited by Churches Together in Christleton to these United Services. The 12 noon services Monday to Saturday last about 30 minutes. Refreshments and fellowship also provided.

FEBRUARY 2020:

Every weekday **Monday to Friday:** 9am: Morning Prayer

Every **Thursday:** 4pm-5pm: Church Band rehearsal; 5pm-6pm: Church Choir rehearsal.

Sunday 2nd: from 8am: Parish Breakfast in the Parish Hall.
(Candlemas) 9.00am: Holy Communion. Refreshments after in Parish Hall.
(Presentation of 10.45am: Morning Worship. Refreshments.
Christ in Temple) 4.00pm: Young Person's Service.

Tuesday 4th: 7.30pm: Weekly Home Discussion Group. (venue to be advised).
Wednesday 5th: 10.45am: United Holy Communion (Churches Together). Refreshments.

Sunday 9th: 9.00am: Holy Communion. Refreshments after in Parish Hall.
(3rd before Lent) 10.45am: Morning Worship. Refreshments.
4.00pm: Evening Prayer (BCP).

Tuesday 11th: 7.30pm: Weekly Home Discussion Group. (venue to be advised)
Wednesday 12th: 10.45am: Holy Communion (BCP). Refreshments.

Sunday 16th: 9.00am: Holy Communion. Refreshments and Produce Sale.
(2nd before Lent) 10.45am: Morning Worship with Communion. Refreshments.
4.00pm: Messy Church in the Parish Hall.

Monday 17th: 12.30pm: Luncheon Club in the Parish Hall.
Tuesday 18th: 7.30pm: Weekly Home Discussion Group. (venue to be advised).
Wednesday 19th: 10.45am: Holy Communion (BCP). Refreshments.

Sunday 23rd: 9.00am: Holy Communion. Refreshments after in Parish Hall.
(Next before Lent) 10.45am: Morning Worship. Refreshments.
4.00pm: Contemplative Communion Service.

Tuesday 25th: 7.30pm: Weekly Home Discussion Group. (venue to be advised)
Wednesday 26th: 10.45am: Holy Communion (BCP). Imposition of Ashes. Refreshments.
(Ash Wednesday) 7.30pm: Holy Communion with Imposition of Ashes (To be confirmed)

Bell ringing practice is every **Tuesday** evening. (Contact: Nikki Dromgoole)

Church cleaning is every **Thursday** morning. (Contact: John Milton)

Every **Thursday:** 4pm-5pm: Church Band rehearsal; 5pm-6pm: Church Choir rehearsal.

BCP means: A service following THE BOOK OF COMMON PRAYER. (Traditional older style language.)

Other services generally follow COMMON WORSHIP with modern language.

All Calendar entries subject to correction or change. Check also the "What's On" calendar on the church website as this may show more up-to-date information.

APPEAL FOR HELP:

Sheila & Richard Bennett are looking for some help with their household tasks. If you think that you can help please call Sheila on: 336335. They live in Christleton near to the Primary School.

THE REGULAR PATTERN OF SERVICES IS SHOWN BELOW:

Please note that actual services may differ from this pattern because of special events and festivals, so please check calendars and notices, including the on-line calendar on the website.

	1 st Sunday	2 nd Sunday	3 rd Sunday	4 th Sunday	5 th Sunday
9:00am	Holy Communion	Holy Communion	Holy Communion	Holy Communion	Holy Communion
10:45am	Morning Worship	Morning Worship	Morning Worship with Holy Communion	Morning Worship	Morning Worship
4:00pm	Young Person's Service	Evening Prayer (BCP)	Messy Church in Parish Hall. (Term time only)	Contemplative Communion	Taizé Service

SERVICE STYLES: **9am** is in a traditional style with sermon, organ, and often a small robed choir. **10.45am** is in a more contemporary style with a sermon/talk, using a wider range of traditional and modern hymns and songs, with the words on a display screen, and music mostly played on a piano/keyboard or by the church band.

CHRISTMAS IS COMING:

Please note in your diaries:

Sun 1st Dec: 4pm: Christingle Service.
 Sun 8th Dec: 10.45am: Toy Service.
 Sun 22nd Dec: 6.30pm: Nine Lessons & Carols.
 Christmas Eve: 4pm: Crib Service
 7pm: Carols Around the Tree
 11.30pm: Holy Communion
 Christmas Day: 9am: Holy Communion.
 10.45: Morning Worship



FUNDRAISING EVENTS COMING UP

Sat 7th Dec: Wreath making and
Christmas Produce Sale.
(See ad below)

2020:

Sat 25th Jan: Burns Night Ceilidh.
Live band. Supper.
Tickets from Joce Platel.

Sat 25th April: Supper/Concert with
Philip Chidell (violin).

Sat 20th June: Jig Saw Jazz evening.



CHRISTLETON WI

Meets on the 2nd Wednesday each month.
 7.15pm in the Parish Hall
 New members welcome.
 Details from Elizabeth Inall (Tel: 336500)

Next meetings:

11th Dec: Christmas Party & Meal
(at Eaton Golf Club)

8th Jan: OPEN MEETING - ALL WELCOME
 The Work of Chester
 Street Pastors.

Sat 7th December - Parish Hall

10am - WREATH MAKING WITH ANGELA HASWELL

Refreshments, Soup & Sandwich Lunch
 Tickets: £15 - Joce Platel: 01244 332466
 (or from PCC members)

2.30pm: CRAFT & PRODUCE SALE

Christmas Produce & Crafts
 Homemade Mincemeat. Christmas Puddings,
 Cakes, Crafts. Refreshments. All welcome
Fundraiser for St James' Church

CHRISTLETON HIGH SCHOOL:

I find it hard to believe that we are well into the second half of the Autumn term, in my first year as Headteacher. I would like to publicly thank my predecessor, Damian Stenhouse, for passing over to me, a school which is in a good strong place with wonderful students and a team of committed staff.

The term started with a celebration of the fantastic achievements of our students in Year 13 and Year 11 in their summer examinations. It was wonderful to watch them receiving their results with all their hard work coming to fruition. We are delighted that so many of our Year 11 students have chosen to stay with us in our Sixth Form, together with nearly 40 students from other schools; it is our largest enrolment into Year 12 for a significant number of years.

We are very grateful to the Marjorie Boddy Charitable Trust and the Ursula Keyes' Trust in fully funding the new disabled lift access which is now in place and look forward to welcoming representatives into school in the near future, to see for themselves the good work provided by the Trusts.

Year 11 mock GCSE examinations will take place in December, and shortly afterward, in January the Year 13 A-level mocks. These exams fully replicate the processes and procedures of the summer exams. They are also crucial in helping staff and students understand what still needs to be done in the final months of the year and the data generated will allow school leaders to clearly identify where intervention is needed.

Our Upper School production of 'Sister Act' was performed to packed houses in November. My thanks go to Simon Phillips and members and many volunteers of the Performing Arts department for facilitating such an excellent show.

The opportunities afforded to our students, go way beyond the classroom and this term has seen a huge variety of activities that build the cultural capital of our students. I have highlighted many opportunities in my weekly Headteacher's Blog on the school website.

Our commitment to the arts and creative subjects remains at the heart of what we do; there are many pressures on schools to narrow the curriculum and focus on the core subjects and the EBacc. We take great pride in promoting and enhancing the creative elements of our curriculum, whether it's 'Washing Line Week' when every Art student in the school will have a piece of work displayed in the school Hall, to the DT

exhibition displaying students' coursework, to our wonderful school productions. These are the things that build character, these are the things that are not measured in league tables, or data, but to us, are just as important at the academic outcomes we achieve, and will continue to be at the heart of our offer to our students, so that they can become well-rounded individuals, with an appreciation of their role in a multi-cultural modern Britain.

Finally, I would like to wish you all a very happy Christmas and New Year.

D P Jones

Headteacher, Christleton High School

CTC SUMMER TEAS:

Many thanks to all those who baked, served, washed up and supported this year's Summer Teas.



Attendance was steady throughout the season and a little up on last year's...so we must be eating more cake in Christleton!

As a result we have sent a cheque for £1678.90 to the Hospice of the Good Shepherd which some of us visited on one of the Lent outings earlier in the year.



Only six months to wait till next summer's start again!

Joce Platel

(Churches Together in Christleton)

SAY LADY....

In my last submission to this august publication I described a beautiful, peaceful and gentle flight in our little old aeroplane.

Well, the story that I'm going to relate is about flying, in essence it's a true tale, but in a completely different environment since it happened in the busy controlled airspace that surrounds the airfields of our capital city. In this airspace many commercial flights operate under the "Instrument Flight Rules (IFR), an environment completely removed from the stress-free and

uncontrolled air through which we flew together on our trip down to Shobdon under the "Visual Flight Rules (VFR).

In the controlled airspace around London the commercial flights all need to file formal flight plans prior to their flights and they are subject to clearances from air traffic controllers, clearances that are often then modified once in the air as the tactical situation dictates. For example, a flight inbound to, say, London Stanstead will show on its flight plan what it hopes to do when approaching the destination so as to arrive expeditiously and thus minimise the fuel burn. However, in the busy "real world" it is usually the case that air traffic controllers will issue multiple clearances such as radar vectored headings, clearances to descend in stages and, very often, they will order speeds to fly as well. All this does, of course, take our incoming flight crew away from their ideal flight-path and descent profile, the latter being a continuous descent with the engines just turning over at idle power all the way down from their cruising altitude to a point when they are only 4 miles from the runway. At this stage the wheels are lowered, landing flaps deployed, engine power is increased a little and the final pre-landing checklist completed.

You can imagine that with the number of aircraft on a given radar controller's frequency all this tactical controlling makes for lots of talking, especially since all clearances to aircraft must be read back verbatim for safety's sake. When things are really busy I often wonder just how the controllers do keep their wits and are able maintain track of everything that is going on. Of course, strict adherence to the standard radio telephony procedures is essential by all....usually!

Well, on this day a British jet airliner with the callsign "Jetset 123" was descending for landing at Luton Airport and it was very busy down there. The aircraft's initial descent was controlled by "London Control" and it's clearance was to fly direct to the airfield and descend to "Flight Level 110," but now the controller instructed the flight crew of Jetset 123 to:

"Contact Luton Radar, frequency One Two Nine Decimal Five Five Zero."

After reading this back the crew switched their radio's frequency to Luton on 129.550, and briefly listened out; it was busy and the lady controller seemed to be talking fast, fairly constantly and she sounded under stress.

One of the pilots checked in: "Luton Radar, Jetset 123 descending Flight Level One One Zero direct Luton."

The controller replied:

"Jetset 123, radar vectors ILS approach Runway Two Six, turn right heading Zero Four Zero degrees, descend Altitude Five Thousand Feet on Luton QNH One Zero Zero Eight, fly speed Two Five Zero Knots.

The pilot read all these clearances back exactly, but then finished with a small and reasonable request:

".....do you wish me to descend immediately to Altitude Five Thousand Feet or is the descent at my discretion?"

In hindsight, this request was a mistake because it was the proverbial straw that broke the camel's back or, in this case, the very pressured and stressed controller's sense of humour since she thundered back - almost shouting at the aircraft:

"Jetset 123, I cleared you to descend to Altitude Five Thousand Feet SO DO IT NOW.....ACKNOWLEDGE!"

After this outburst the busy frequency became instantly quiet for a second or two....not long really, but in large contrast to all the constant speaking that had preceded. The silence was broken by a slow and deep American drawl that came from somewhere up there. It said:

"Say lady, wasn't I married to you one-time?.....!!!

Richard Keech

THE HISTORY FILE. DECEMBER 2019

Best Kept Village Competition.

News has just reached the village that Christleton has won the Cheshire Community Council Best Kept Village Competition again, in the final year of the Competition. Councillor Janet Brown who together with the late Jim Partington has represented the village for many years at the event, was delighted to phone me with the latest success. The competition formerly known as the Community Pride Competition was initiated in 1957, to develop and highlight a sense of pride amongst people throughout Cheshire.



The Competition exemplifies the community spirit in all the villages. It emphasises just how much voluntary work is undertaken to keep Cheshire a beautiful and attractive county. The competition encourages villages to improve every aspect of village life, much of which is under threat in so many different ways.

I think that the first time Christleton won the competition was in the 1960's and the copper beech tree presented to the village that year is still standing at the corner of the churchyard adjacent to the flag pole and the Manor House garden. I have seen a picture of the late Rector Rev'd Lawrie Skipper planting the tree. Many people will remember the Best Kept Village Sign (pictured) which was situated on the Village Green adjacent to the Butcher's Shop, a sign that was vandalised and stolen in the early 2,000's. Since then many of the BKV award plaques have been placed on the front of the Parish Hall, and the water colour paintings now awarded to winners, hang in the Methodist Chapel.

I believe that Christleton won the event so many times because of the lack of power and telephone lines in the centre of the village. The removal of these unsightly lines and poles throughout the village was the result of Chairman Tony Gardner & Parish Councillors making an agreement with MANWEB and British Telecom to relay them underground. However most people will not realise that one of the main reasons for this undertaking, was that swans taking off from the Pit in the 1970's continually crashed into the surrounding power lines, causing shortages, and tripping fuses throughout the village. The removal of these lines and poles made Christleton a more attractive place, both to live in and visit, and a wonderful place to photograph. I'm convinced that the judges saw the village with new eyes after their removal.

I was invited to give presentations about "The Heritage of Christleton" twice, at the Presentation of the Awards Ceremonies at Congleton in the 1990's and Chester in 2000, and the village is very well respected all over the county for the conservation work done by the Parish Council, Pit Group and villagers. As a result of this reputation we had also hosted the "Festival of British Villages" in 1976, led that year by Emma Hall and members of the WI, St James' Church, The Primary & High Schools and the Parish Council. Events on the Village Green included Maypole Dancing, a traditional Mummers Play, and the Nativity scene from the Chester Mystery Plays, led by members of the reknowned Christleton Players Theatrical Group.

In addition to the Best Kept Village and Community Pride Competitions, Cheshire Community Council founded in 1930 and based in Watergate Street, Chester also promoted books about the History of the County, and supported organisations like The County Playing Fields Association, to improve all aspects of community life throughout the County. Christleton has been proud to be part of the success of the organisation over the years, and to win Best Kept Village in the final year of the competition is a great joy.

David Cummings



(On the Green celebrating the award)

NATURE NOTES DECEMBER 2019

What an extraordinary year for weather this has become, with Christleton Parish already recording over twice the annual expected rainfall by the end of October. The Pit at Little Heath is full and the overflow working for the third time this year. The River Gowy has also overflowed its banks five times since June, making entry to the reserve at Hockenhull impossible, and creating huge lakes along its length, as could be seen at Stamford Bridge and on farmland around Stapleford & Walk Mills. Fortunately the wet meadows are doing their task and absorbing the excess water, with little damage to property. It is rare to see river water under all three bridges at Hockenhull, but this is now happening more frequently.

Thousands of migratory pink footed geese from Iceland have taken up residence in the area, and can be seen in huge skeins across the sky most mornings and evenings. They are very noisy, and fly in distinctive V shaped formations, sometimes with hundreds of geese flying together. They often twist and turn in flight, calling to each other and changing leaders as they fly. Canada Geese which are much bigger, and can be recognised by their black heads and long white necks are also flying around in large groups, but they tend to fly much lower, and have a deeper throated call. The rare sight of 25 smaller Brent geese, were spotted flying south to north along the Gowy corridor in the middle of October. This sighting was later confirmed by a birdwatcher from Great Barrow, who had seen them on the same day. As far as I am aware this is the first sighting of Brent geese in the area.

We had great excitement at Hockenhull at 9.00am on 4th November when three young otters appeared swimming and playing in the river, coming from the Walk Mill direction towards the middle bridge. Several times one appeared to climb up onto the bank, but then would reappear with the others as they playfully dived and swam together. We watched them for what must have been three or four minutes, in perfect sunny conditions, a truly beautiful morning. This was one of the most exciting and thrilling wildlife scenes I've ever witnessed and luckily I managed to capture it with the long lens camera, until the otters came so close, (about twenty feet away) took one look at me standing on the bank, dived under water, and then disappeared from view.

Pink Footed Geese

Other interesting sightings these last few weeks include the appearance of hundreds of fieldfare and redwings, wintering thrushes from Scandinavia, flying over the Christleton countryside and the canal at Rowton, together with a good number of mistle thrushes and jays in the churchyard. Groups of lapwing or (peewits) have come back, with as many as four hundred seen on land between the reserve at Hockenhull and Tarvin Road. Buzzards again dominate the skies in the Parish, and their calls can often be heard from quite a distance. Sparrowhawks on the other hand are far more secretive, and swoop swiftly into gardens to catch their unsuspecting prey. Examples have come from gardens throughout the parish, the ones shown from Vicars Cross and Rowton.

The small group of shoveler ducks have once again taken residence at the pit this winter as has a lonely grey heron, clearly an indication that there are a large number of fish present. I've also heard recently that several of our young teenage fishermen have caught some of the big carp that exist there, and they have been seen delightedly showing off their prize catch for cameras.

David Cummings



Sparrowhawk



Luncheon Club

**The next lunch is at
12noon (for 12.30) in the Parish Hall on
Monday 16th December 2019**

No charge but donations welcome.

**This is our Christmas Lunch
This is always a busy lunch
*Sorry, the booking list is now full.***

**More details: Liz: 409414;
or Janet: 325529. Thank you.**

**Future dates:
Mon 20th Jan; Mon 17th Feb**

FROM THE REGISTERS:

With thanks to
Ann White who is
gathering this
information:



No Weddings or Baptisms to list.

Funerals:

24th October 2019: Norma Nowland

28th October 2019: Evelyn Wilson

22nd November 2019: Tim Rowe

Note: All these were at St James' Church unless
otherwise indicated.

Handel's Messiah in Liverpool

"Hallelujah!"

Saturday 4 January 2020

7pm Liverpool Philharmonic Hall
Royal Liverpool Philharmonic Orchestra & Choir

Sofi Jeannin *conductor*
Jeanine De Bique *soprano*
Jennifer Johnston *mezzo-soprano*
Oliver Johnston *tenor*
William Thomas *bass*

There are a few seats left on the coach from Chester
run by Concertgoers (Jan & Graham Ranger) to the
above. Departure time from the car park in front of
the law courts opposite the HQ building is 5.15pm
and the cost including coach and tickets is £40.

Please contact Jan or Graham direct on 335614
or by email to concertgoers@hotmail.co.uk.

COUNTESS OF CHESTER HOSPITAL

AROUND THE WARDS

**ON WEDNESDAY
18TH DECEMBER**

**MEETING IN THE CHAPEL
AT 6.30PM**

Followed by Refreshments

ALL WELCOME!

<mailto:john.kingsley@nhs.net>



CHRISTLETON PARISH COUNCIL NEWS:

KING GEORGE'S FIELDS (KGF) TRUST

The Trustees of KGF would like to thank both Christleton Village Fete and Christleton Village Show for their generous donations towards the upkeep of King George's Playing Fields which is gratefully received and very much appreciated.

BEST KEPT VILLAGE AWARDS

We are delighted to announce that Christleton won the Best Kept Village award in their category (1001-2500 population) this year. It is particularly pleasing as this is the last year of the competition as the sponsors ESSAR of the event have pulled out and Cheshire Community Action have been unable to find another sponsor.

Christleton also won a 'Little Gem' award for The Square – this award is for a particular area or item the judge's feel deserve a special mention when they do their rounds, so well done to everyone in The Square for contributing to this award.

There were special mentions for the Village Shop, Dental Surgery, The Ring-o-Bells, The Plough and the Cheshire Cat. King George's Playing Fields were praised along with the Cheshire View, War Memorial and all the memorials and Historical artefacts were well cared for.

The Church, Chapel and Cemeteries were well kept and the rose garden at the churchyard entrance had a special mention.

The Pit with its great facilities for wildlife, ducks and fishing along with the ponds, streams and canal were excellent. Hockenhall Platts with its nature reserve, flora

and fauna provided a well-maintained recreational area, The Legion Meadow was also praised for the attractive ranges of wildflowers and pathways.

Overall the results were excellent with special thanks to the Village Assistant, Derek, with credit going to him for his excellent work in keeping the village tidy and free from litter.

The full Judges Comments Sheet can be view on the Parish Council website at www.christleton-pc.gov.uk

FUTURE PROJECTS

There will be a short presentation at the December meeting of the Parish Council from John Heselwood, Policy & Development Manager from Cheshire Community Action to give guidance on producing a Neighbourhood Plan for Christleton. He will advise on the neighbourhood planning process, resources and support available. ***Residents of the village will be most welcome to attend and hear what he has to say.***

**THE PARISH COUNCIL WOULD LIKE TO WISH
EVERYONE A VERY MERRY CHRISTMAS AND
HAPPY NEW YEAR**

Sue Thwaite, Clerk to the Council.

HOME - HEAT Solutions

Gas & Oil Heating Services

Gas & Oil Boiler Replacement Specialist.
Heating Design, Installation & Repair.
Boiler Service & Breakdown.
Gas Safety Inspections.



01244 349044



www.homeheatsolutions.co.uk

Drakes Haircutters

of Christleton

Ladies & Gents Salon

Mon: Closed
Tues: 9.15 - 5.00
Wed: 9.15 - 5.00
Thurs: 9.15 - 8.00
Fri: 9.15 - 6.00
Sat: 9.00 - 3.30
Sun: 11.00 - 3.00

Discount for new clients—bring this ad.

**Holly House, Village Road,
Christleton, CH3 7AS**

Tel: (01244) 332660 www.drakeshaircutters.co.uk



Artichoke

Café Bar Bistro



*"relaxed and friendly
service combined with quality food
and drinks"*

Great coffee, fabulous food,
Brilliant beers and wonderful wines

www.artichokechester.co.uk

The Steam Mill, Chester

Ring O' Bells Christleton

The Ring O' Bells is a welcoming Cheshire pub combining high class food with the finest wines and beers. Venue is available for christenings, weddings and funerals.

Regular events & offers...

Coffee AM - Monday to Saturday from 9am, pop in and enjoy our fabulous coffee or loose leaf tea and some delicious sweet treats or something more substantial from our brunch menu.

2 for 1 Burgers Every Monday enjoy 2 for 1 Burgers, buy one of our mouth-watering burgers and get another one free of charge!

2 for 1 Pizzas Every Wednesday enjoy 2 for 1 Pizza, buy one of our fabulous homemade hand stretched stone baked pizzas & get another one free of charge!

Saturday Breakfast Club Every Saturday from 9am serving our Breakfast/Brunch menu alongside tea, coffee & cakes.

Tel: 01244 335422 Email: info@ringobellschester.co.uk
Address: Village Rd, Christleton, CH3 7AS

ROCK HOUSE DENTAL PRACTICE

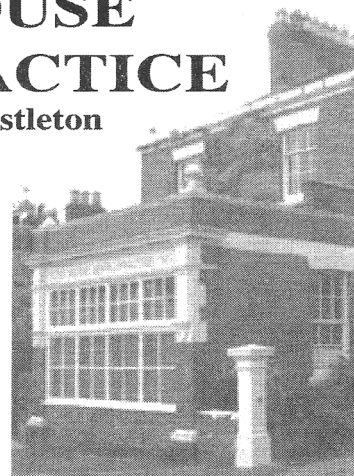
Village Road, Christleton

Damian Murphy

B.D.S. D.G.D.P. (UK)

and Associates with hygienists

- ☐ All treatments available adapted for the disabled
- ☐ Special interest in cosmetic and preventative dentistry
- ☐ Implant dentistry



www.rockhousedentalpractice.co.uk

01244 332162

digital ☒

AIRON SERVICES

01244 346722

- Repairs to TVs, DVDs, digiboxes, videos
- Set-ups and re-tuning
- Satellite and aerials
- All work guaranteed
- 30 years experience

Mark Lloyd
Laurel Grove, Hoole, Chester
Tel: 01244 346722



Call
me for
free
advice

SPACE TO ADVERTISE YOUR BUSINESS

Contact our advertising
manager: John Eccles
(see contacts page)

We are delighted to welcome to Willington Hall Hotel our new **Head Chef, Gareth John** to manage our kitchen, oversee our menus and work with our talented team to create wonderful, tasty dishes for our customers to enjoy.

Why not come and sample our **Lazy Sunday Lunch** and our lovely **Cheshire Afternoon Tea**?

Tel: 01829 752321

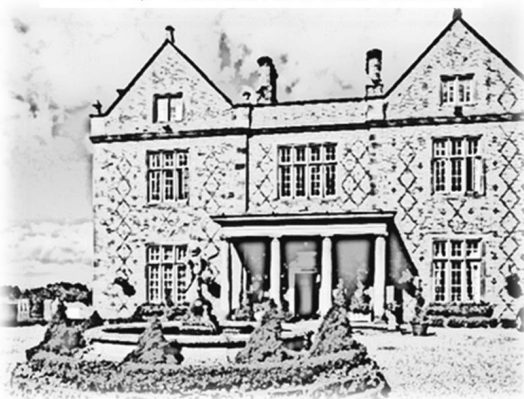
or

Email: info@willingtonhall.co.uk

Willington Hall, Willington Lane, Tarporley, CW6 0NB



WILLINGTON HALL



David Joinson Quality Meats



- ◇ *Award Winning Butcher*
- ◇ *Prize winning sausage maker*
- ◇ *Supplier to the catering trade*

125 Christleton Road
Boughton
Chester CH3 5UQ
Tel: 01244 325614

15a Market Hall
Chester CH1 2HH
Tel: 01244 323716
mobile: 07783318670

DavidJoinsonQualityMeats@outlook.com

GORDON BROWN PLUMBING & CENTRAL HEATING (Christleton) LTD

Gas Safe Registered
Boiler replacements / repairs
Central Heating Installations
Plumbing Alterations and repairs

Sandiway, Plough Lane
Christleton, CH3 7BA
01244 335785

SPACE TO ADVERTISE YOUR BUSINESS

Contact our advertising
manager: John Eccles
(see contacts page)

Mitchell Group

it's our people who make the difference



Mitchell Group, Stanney Mill Lane,
Cheshire Oaks, Chester CH2 4RG

Tel: 0151 346 5555 www.mitchellgroup.co.uk



Sundays - At home with the family

Jennie's Catering OF CHRISTLETON

Every Occasion Catered For:

Canapes
Buffets
Finger Buffets
Afternoon Teas
Dinner Menus
Freezer Orders

Waiter Service as Required

**For Help and Friendly Advice
Contact**

Jenny Adam 01244 330090

SOME PARTICULAR MOMENTS DURING 2019:



Luncheon Club - January

Jazz Night
(June)



Supper with
Philip Chidell
(March)



Alf



Flower Service - July



Fete—June



Easter Egg Hunt—April



Wet BBQ— July



Janet & John's busy Coffee Morning in July

One of our readers, Josephine Hartley, has offered this painting of hers with the following symbolism:

Yellow: splendour of Father God.

Red: redeeming passion of Christ.

Blue: ubiquitous Holy Spirit as blue sky.

Spring green: feminine in divine; women in ministry.

The green lines in the design resemble the frame of a pushchair. Josephine's hope is that as we look at it we can imagine ourselves as the vulnerable baby/toddler of Jesus in this world of today.

